



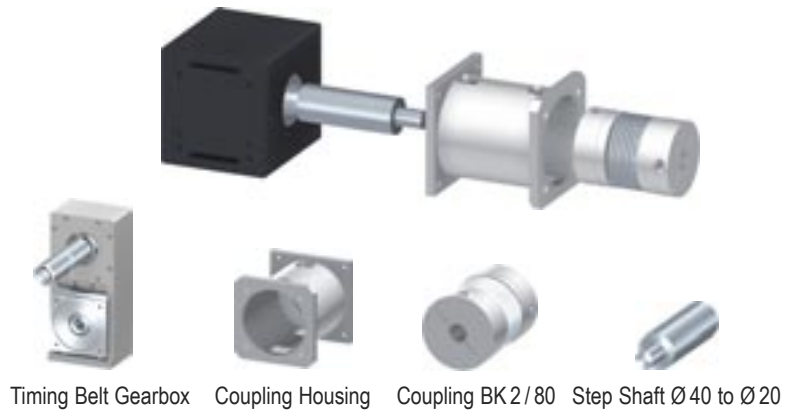
40/40 40/40 heavy duty 40/80 80/80 80/100 80/120 80/160 120/120-50 120/120-75

**Pulley Assemblies**



AT 10/22 AT 10/50 50, closed

**Omega Drives**



Timing Belt Gearbox Coupling Housing Coupling BK 2/80 Step Shaft Ø40 to Ø20

**Motor Connection Components**



AT 3/10 AT 5/16 AT 10/22 AT 10/50 AT 10/75

**Timing Belts**



Ø16 (VA) Ø25 (VA)

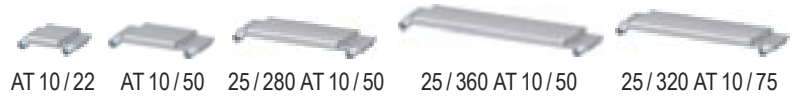
Special Fastener 120

**Guidance Rails**



16 Ø42 (rust-free) Roller Axle 16 (concentric, excentric)

**Rollers, Roller Axles 16**



AT 10/22 AT 10/50 25/280 AT 10/50 25/360 AT 10/50 25/320 AT 10/75

**Timing Belt Tensioners**



25 Ø72 Roller Axle 25 (concentric, excentric)

**Rollers, Roller Axles 25**



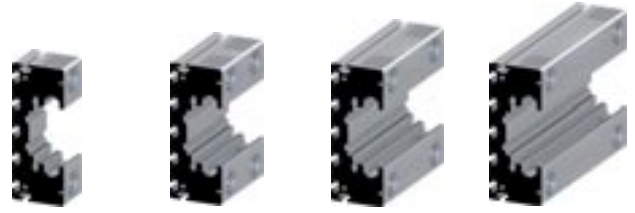
22 50 TSA 22 ZB 50 ZB

**Timing Belt Tensioners, external**



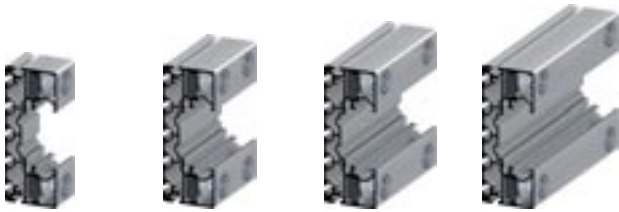
16/160/60/2/S    16/160/140/4/S    16/160/200/4/S

**Carriages 16/160 with service pockets**



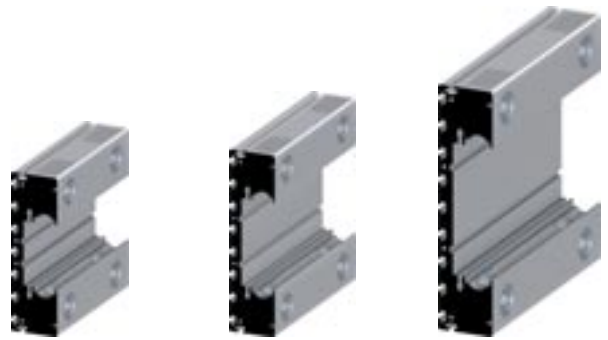
16/200/60/2/S    16/200/140/4/S    16/200/200/4/S    16/200/280/4/S

**Carriages 16/200 with service pockets**



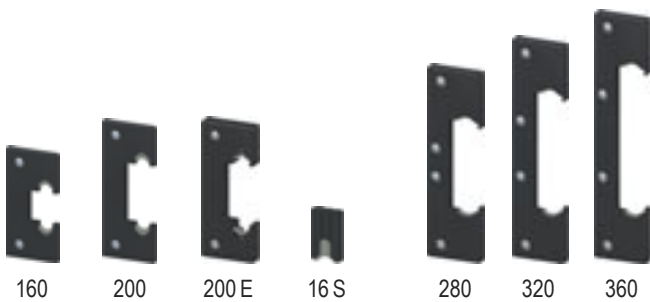
16/200/60/4 sl    16/200/140/4 sl    16/200/200/4 sl    16/200/280/4 sl

**Carriages 16/200 superlight**



25/280/280/4/S    25/320/320/4/S    25/360/360/4/S

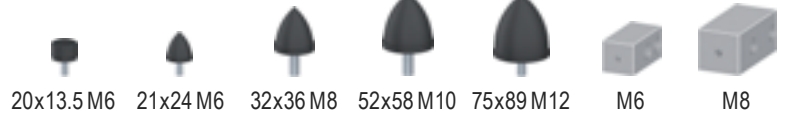
**Carriages 25**



160    200    200 E    16 S    280    320    360

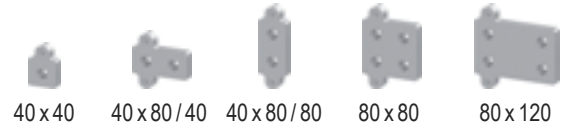
**Wiper And Lubrication Systems**





20x13.5 M6    21x24 M6    32x36 M8    52x58 M10    75x89 M12    M6    M8

End Stops



40 x 40    40 x 80 / 40    40 x 80 / 80    80 x 80    80 x 120

Guidance Rail Stop Plates 16



End Of Stroke Set 8

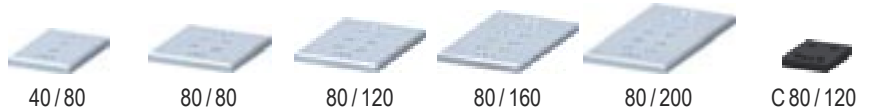


200 x 200    240 x 200    280 x 200  
200 x 160    356 x 200    400 x 100 TSA

Carriage Joining Plates



Limit Switch Cam (100, 120)



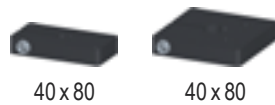
40 / 80    80 / 80    80 / 120    80 / 160    80 / 200    C 80 / 120

Fastener Attachment Plates



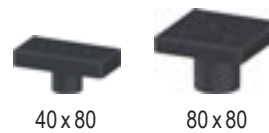
40 x 80    80 x 80    U 80 / 90    80 x 120

Adapter Plates for Pulley Assembly 40 / 40



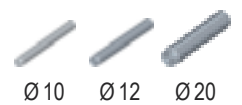
40 x 80    40 x 80

Clamp Elements



40 x 80    80 x 80

Linear Flange Plates



Ø 10    Ø 12    Ø 20

Guidance Rails



C 40 / 57



C 40 / 100



C 80 / 100

**C-Pulley Assemblies**



140 / 8    280 / 8

**Double Carriages C 30 / 43**



140 / 8    280 / 8

**Double Carriages C 40 / 57**



140 / 3    280 / 4

**Single Carriages C 40 / 100**



140 / 3    280 / 4

**Single Carriages C 80 / 100**

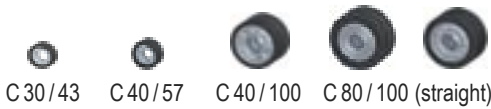


140 / 6    280 / 8

**Double Carriages C 80 / 100**



Omega Drive C-Type AT 5 / 16



**C-Rollers**



Roller Axles

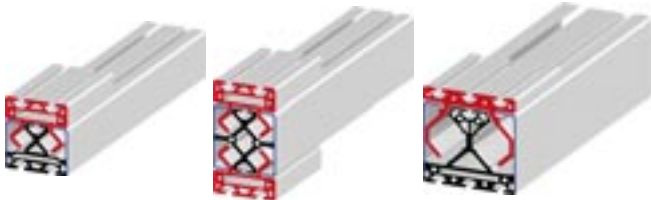


C 40 / 57

C 40 / 100

C 80 / 100

**C-Timing Belt Tensioners**



Pulley Assembly 80 / 90



Carriage 80 / 90



Timing Belt Tensioner 80 / 90



Carriage 120, steel rollers



Steel Strap



Carriage 120, plastic rollers



Roller 100 / 120 steel



Timing Belt Tensioner 120 45°



Roller 100 / 120



Roller Axle (concentric, excentric)



Roller F 80 / 90 (VU)



Roller Axle 100/120 steel (concentric, excentric)



Roller Axle 100/120 (concentric, excentric)

**Linear Actuator 80 / 90 Components**

**Linear Actuator 120 / 120 Components**

| Pulley Assembly |                       |         |
|-----------------|-----------------------|---------|
| Part No         | Description           | Weight  |
| SL0700S         | Pulley Assembly 40/40 | 0.95 kg |

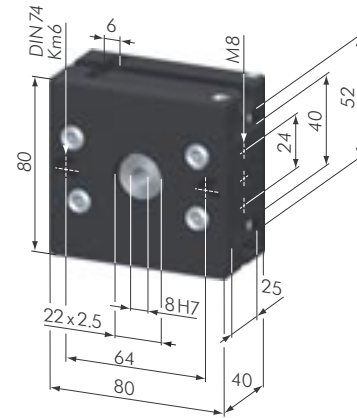


**Application:** This pulley assembly is used in conjunction with *Paletti* linear components to manufacture linear actuators.

**Material:** casing: aluminum, black anodized  
covers: aluminum, black anodized

**Technical Data:**

- timing belt AT 10/22: maximum loading MD = 20 Nm
- timing belt pulley: steel, tooth pitch AT 10  
    Ne of teeth 15
- pitch circle diameter: 47.75 mm
- bearing type: 61805-2RS
- max. bore for motor with keyway: Ø 14 H7
- drive shaft connection: Ø 8 H7, max. Ø 15 H7
- timing belt length 180°: 155.0 mm
- timing belt length 90°: 117.5 mm



SL0700S

Connected to profile via one central fastener 40 G (SV1071V) or one adapter plate. Motor connection via flange plates to customer request.

| Pulley Assembly |                                  |        |
|-----------------|----------------------------------|--------|
| Part No         | Description                      | Weight |
| SL0720S         | Pulley Assembly 40/40 heavy duty |        |

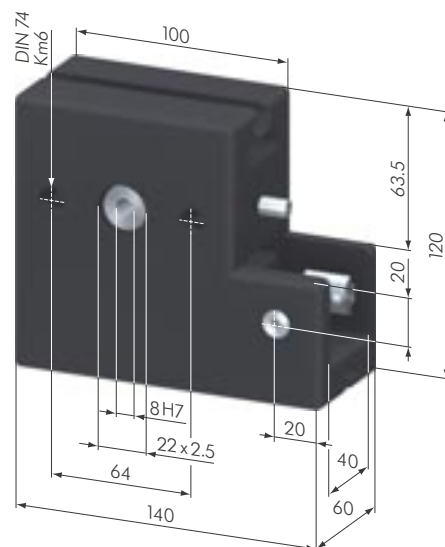


**Application:** This pulley assembly is used in conjunction with *Paletti* linear components to manufacture linear actuators.

**Material:** casing: steel, black  
cover: aluminum, black anodized

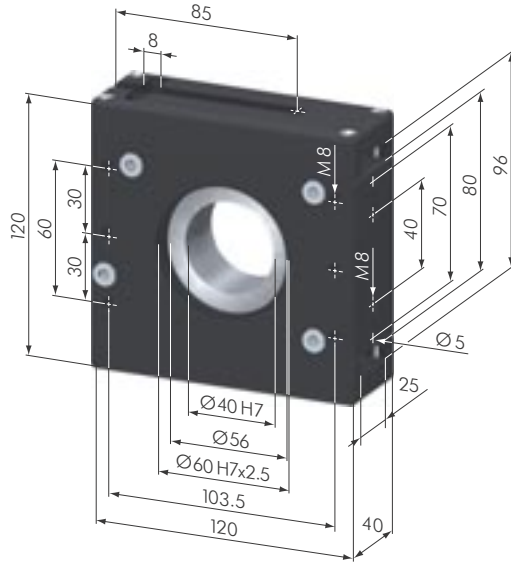
**Technical Data:**

- timing belt AT 10/22: maximum loading MD = 20 Nm
- timing belt pulley: steel, tooth pitch AT 10  
    Ne of teeth 15
- pitch circle diameter: 47.75 mm
- bearing type: 61805-2RS
- max. bore for motor with keyway: Ø 14 H7
- drive shaft connection: Ø 8 H7, max. Ø 15 H7
- timing belt length 180°: 175.0 mm



SL0720S

Connected to profile via two t-nuts and doweling.  
Motor connection via flange plates per customer request.



SL0690S

| Pulley Assembly |                         |         |
|-----------------|-------------------------|---------|
| Part N°         | Description             | Weight  |
| SL0690S         | Pulley Assembly 40 / 80 | 1.94 kg |

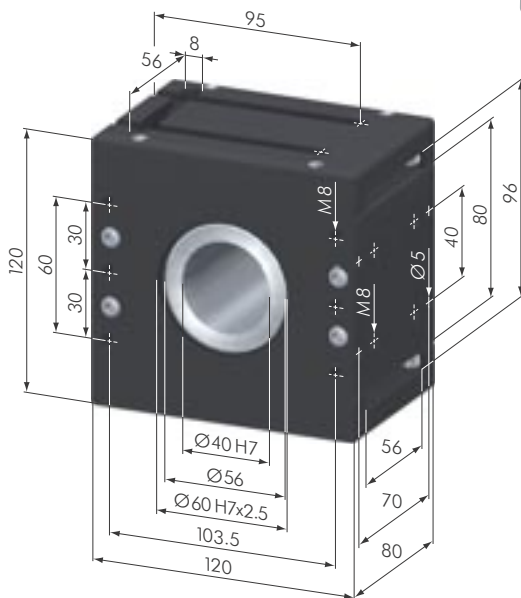
**Application:** This pulley assembly is used in conjunction with *Paletti* linear components to manufacture linear actuators.

**Material:** casing: steel, black  
cover: aluminum, black anodized

**Technical Data:**

- timing belt AT 10 / 22: maximum loading MD = 70 Nm
- timing belt pulley: aluminum, tooth pitch AT 10  
    № of teeth 28
- pitch circle diameter: 89.13 mm
- max. bore diameter: Ø 40 H7 (standard)
- bearing type: 61811-2RS
- With shrunken fit drive (steel) upon customer request (included in the price).
- max. bore for motor with keyway: Ø 30H7
- max. bore for motor with taper lock coupling: Ø 34H7
- timing belt length 180°: 260.0 mm
- timing belt length 90°: 190.0 mm

Connected to profile via two central fasteners 40 G (SV1071V).  
Motor connection via flange plates per customer request.



SL0680S

| Pulley Assembly |                         |         |
|-----------------|-------------------------|---------|
| Part N°         | Description             | Weight  |
| SL0680S         | Pulley Assembly 80 / 80 | 2.27 kg |

**Application:** This pulley assembly is used in conjunction with *Paletti* linear components to manufacture linear actuators.

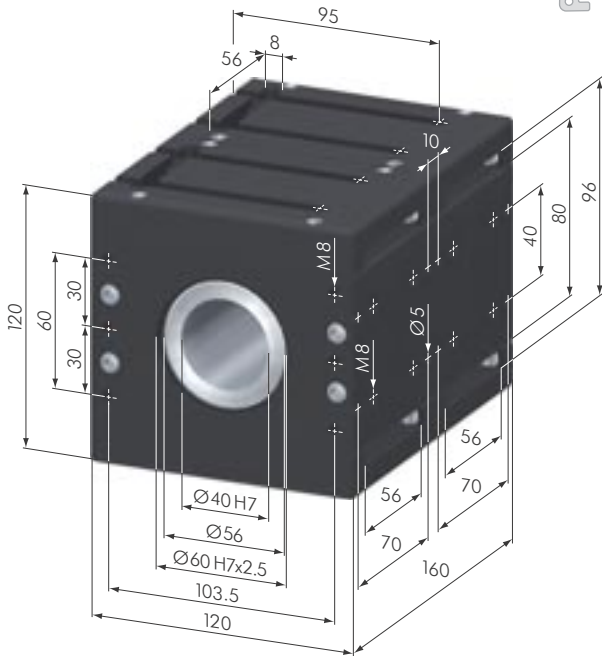
**Material:** casing and cover: aluminum, black anodized

**Technical Data:**

- timing belt AT 10 / 50: maximum loading MD = 100 Nm
- timing belt pulley: aluminum, tooth pitch AT 10  
    № of teeth 28
- pitch circle diameter: 89.13 mm
- max. bore diameter: Ø 40 H7 (Standard)
- bearing type: 61811-2RS
- With shrunken fit drive (steel) upon customer request (included in the price).
- max. bore for motor with keyway: Ø 30H7
- max. bore for motor with taper lock coupling: Ø 34H7
- timing belt length 180°: 260.0 mm
- timing belt length 90°: 190.0 mm

Connected to profile via four central fasteners 40 G (SV1071V).  
Motor connection via flange plates per customer request.





SL0686S

| Pulley Assembly |                          |         |
|-----------------|--------------------------|---------|
| Part No         | Description              | Weight  |
| SL0686S         | Pulley Assembly 80 / 160 | 4.54 kg |

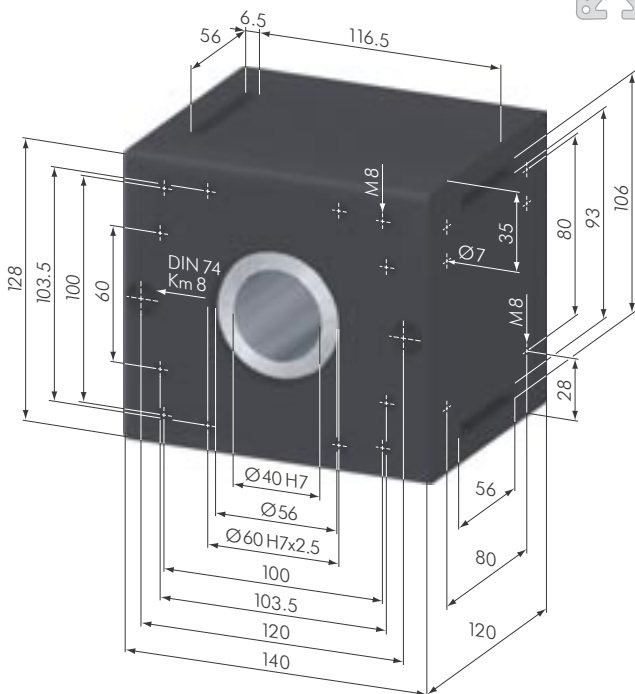
**Application:** This pulley assembly is used in conjunction with *Paletti* linear components to manufacture linear actuators.

**Material:** casing: aluminum, black anodized

**Technical Data:**

- 2x timing belt AT 10 / 50 side by side: maximum loading MD = 200 Nm
- timing belt pulley: aluminum, tooth pitch AT 10  
No of teeth 28
- pitch circle diameter: 89.13 mm
- max. bore diameter: Ø 40 H7 (Standard)
- bearing type: 61811-2RS
- With shrunken fit drive (steel) upon customer request (included in the price).
- max. bore for motor with keyway: Ø 30H7
- max. bore for motor with taper lock coupling: Ø 34H7
- timing belt length 180°: 260.0 mm
- timing belt length 90°: 190.0 mm

Connected to profile via eight central fasteners 40 G (SV1071V).  
Motor connection via flange plates per customer request.



SL0710S

| Pulley Assembly |                                |        |
|-----------------|--------------------------------|--------|
| Part No         | Description                    | Weight |
| SL0710S         | Pulley Assembly 120 / 120 - 50 |        |

**Application:** This pulley assembly is used in conjunction with *Paletti* linear components to manufacture linear actuators.

**Material:** casing: aluminum, black anodized

**Technical Data:**

- timing belt AT 10 / 50: maximum loading MD = 120 Nm
- timing belt pulley: aluminum, tooth pitch AT 10  
No of teeth 32
- pitch circle diameter: 101.86 mm
- max. bore diameter: Ø 40 H7 (Standard)
- bearing type: 62211-2RS
- With shrunken fit drive (steel) upon customer request (included in the price).
- max. bore for motor with keyway: Ø 30H7
- max. bore for motor with taper lock coupling: Ø 34H7
- timing belt length 180°: 300.0 mm
- timing belt length 90°: 214.0 mm

Connected to profile via four central fasteners 40 G (SV1071V).  
Motor connection via flange plates per customer request.



**Pulley Assembly**

| Part N° | Description                    | Weight  |
|---------|--------------------------------|---------|
| SL0688S | Pulley Assembly 120 / 120 - 75 | 3.82 kg |

**Application:** This pulley assembly is used in conjunction with *Paletti* linear components to manufacture linear actuators.

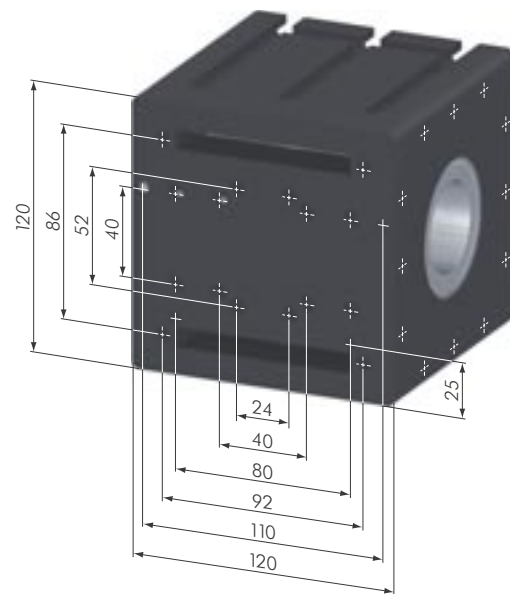
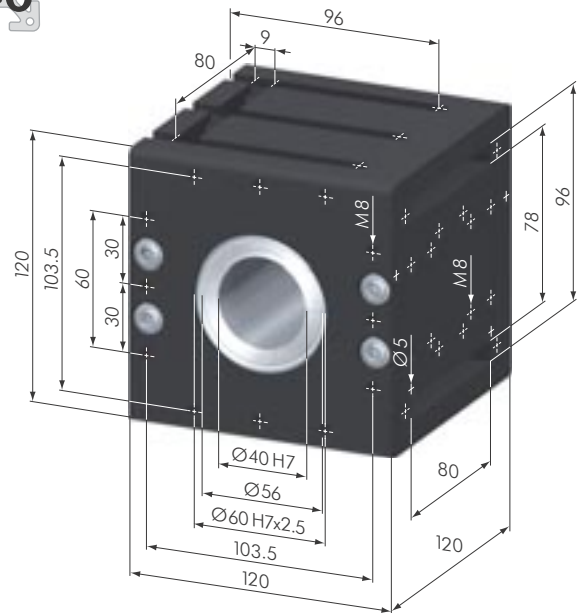
**Material:** casing: aluminum, black anodized

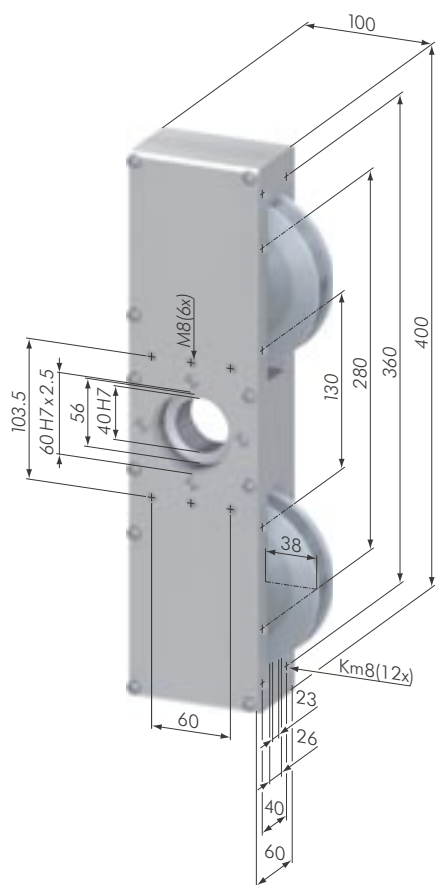
**Technical Data:**

- timing belt AT 10 / 75: maximum loading MD = 120 Nm
- timing belt pulley: aluminum, N° of teeth AT 10  
N° of teeth 28
- pitch circle diameter: 89.13 mm
- max. bore diameter:  $\varnothing 40$  H7 (Standard)
- bearing type: 6011-2Z
- With shrunken fit drive (steel) upon customer request (included in the price).
- max. bore for motor with keyway:  $\varnothing 30$  H7
- max. bore for motor with taper lock coupling:  $\varnothing 34$  H7
- timing belt length 180°: 260.0 mm
- timing belt length 90°: 190.0 mm

Connected to profile via four central fasteners 40 G (SV1071V).

Motor connection via flange plates per customer request.

**40**

**SL0688S**



SL0600N



| Omega Drive |                        |         |
|-------------|------------------------|---------|
| Part No     | Description            | Weight  |
| SL0600N     | Omega Drive AT 10 / 22 | 5.94 kg |

**Application:** This pulley assembly is used in conjunction with Paletti linear guidance components.

**Material:** casing: aluminum, natural anodized

**Technical Data:**

- timing belt AT 10 / 22: maximum loading MD = 70 Nm
- timing belt pulley: aluminum, tooth pitch AT 10  
No of Teeth 28
- pitch circle diameter: 89.13 mm
- max. bore diameter: Ø 40 H7 (Standard)
- With shrunken fit drive (steel) upon customer request (included in the price).
- max. bore for motor with keyway: Ø 30H7
- max. bore for motor with taper lock coupling: Ø 34H7



SL0602N



| Omega Drive |                          |         |
|-------------|--------------------------|---------|
| Part No     | Description              | Weight  |
| SL0602N     | Omega Drive 22, Carriage | 15.5 kg |

**Application:** This pulley assembly is used in conjunction with *Paletti* linear guidance components. Mated with carriage 16 / 160 / 400 / 4.

**Material:** casing: aluminum, natural anodized

| Omega Drive |                        |        |
|-------------|------------------------|--------|
| Part No     | Description            | Weight |
| SL0610N     | Omega Drive AT 10 / 50 | 9.5 kg |

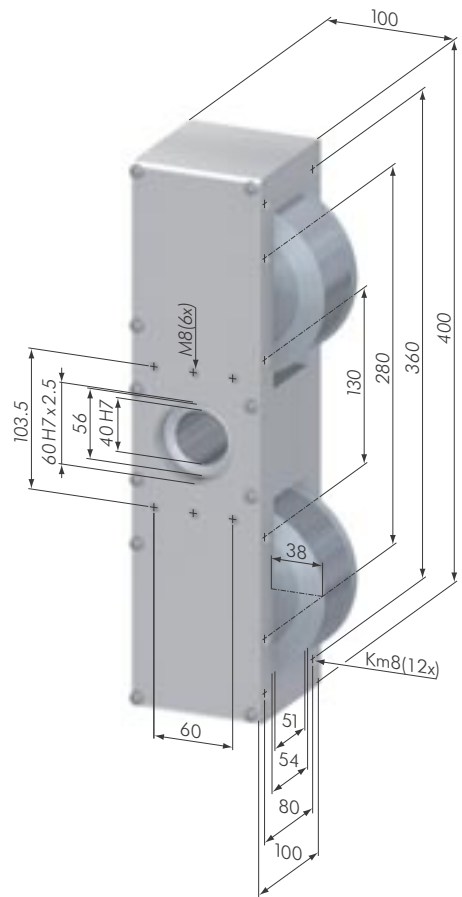


**Application:** This pulley assembly is used in conjunction with *Paletti* linear guidance components.

**Material:** casing: aluminum, natural anodized

**Technical Data:**

- timing belt AT 10 / 50: maximum loading MD = 100 Nm
- timing belt pulley: aluminum, tooth pitch AT 10  
Ne of Teeth 28
- pitch circle diameter: 89.13 mm
- max. bore diameter: Ø 40 H7 (Standard)
- With shrunken fit drive (steel) upon customer request (included in the price).
- max. bore for motor with keyway: Ø 30H7
- max. bore for motor with taper lock coupling: Ø 34H7



SL0610N

| Omega Drive |                          |         |
|-------------|--------------------------|---------|
| Part No     | Description              | Weight  |
| SL0612N     | Omega Drive 50, Carriage | 19.0 kg |

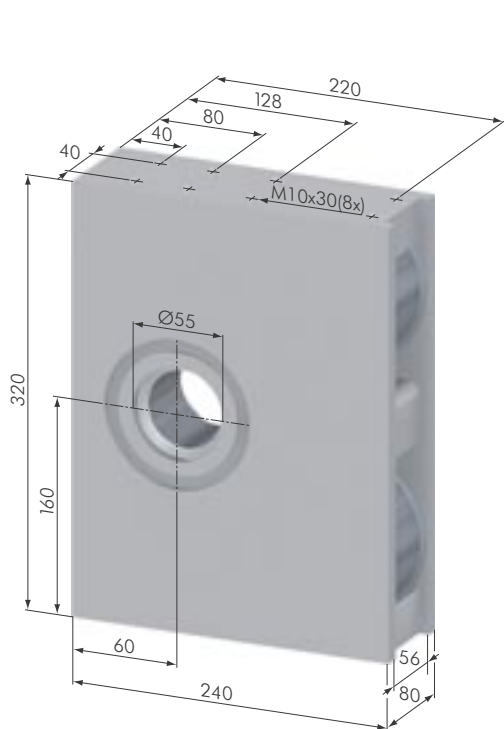


**Application:** This pulley assembly is used in conjunction with *Paletti* linear guidance components.  
Mated with carriage 16 / 200 / 400 / 4.

**Material:** casing: aluminum, natural anodized



SL0612N



SL0630N



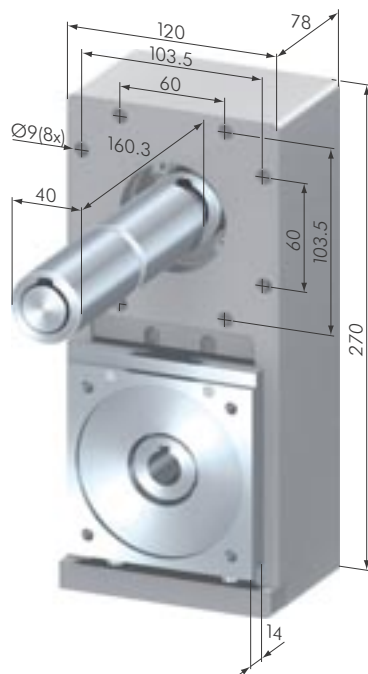
| Omega Drive |                        |        |
|-------------|------------------------|--------|
| Part No     | Description            | Weight |
| SL0630N     | Omega Drive 50, closed | 9.5 kg |

**Application:** Pulley assembly used in conjunction with *Paletti* linear guidance components.

**Material:** casing: aluminum, natural anodized

**Technical Data:**

- timing belt AT 10/50: maximum loading MD = 100 Nm
- timing belt pulley: aluminum, tooth pitch AT 10  
    No of Teeth 28
- pitch circle diameter: 89.13 mm
- max. bore diameter: Ø 40 H7 (Standard)
- With shrunken fit drive (steel) upon customer request (included in the price).
- max. bore for motor with keyway: Ø 30 H7
- max. bore for motor with taper lock coupling: Ø 34 H7



SL5828N



| Timing Belt Gearbox |                              |  |
|---------------------|------------------------------|--|
| Part No             | Description                  |  |
| SL5828N             | Timing Belt Gearbox AT 10/50 |  |

**Application:** Attaches to the pulley assembly and allows for the linear actuator to be powered by a belt driven system, as opposed to a direct coupled motor connection.

**Material:** casing: aluminum, natural anodized

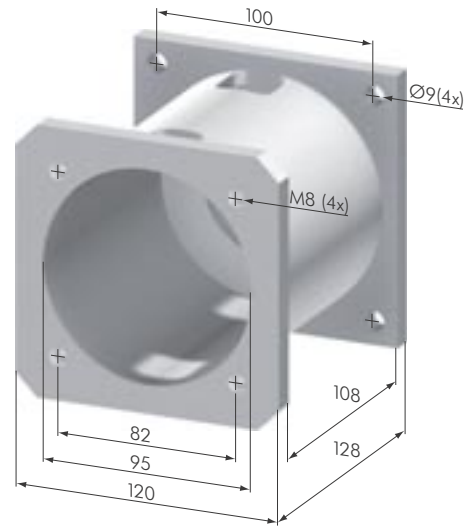
**Technical Data:** Ratio = 1 : 1  
    No of teeth 28 to 28 AT 10/50

| Coupling Housing |                  |         |
|------------------|------------------|---------|
| Part N°          | Description      | Weight  |
| SL8100N          | Coupling Housing | 1.09 kg |



**Application:** The coupling housing provides the support between motor and linear actuator.

Other types are available on request.



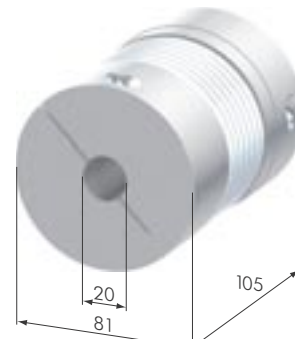
SL8100N

| Coupling BK 2 / 80 |                    |         |
|--------------------|--------------------|---------|
| Part N°            | Description        | Weight  |
| SL8200N            | Coupling BK 2 / 80 | 1.02 kg |



**Application:** The coupling provides high torsional stiffness and smooths out misalignment between motor and linear actuator.

Other types are available on request.



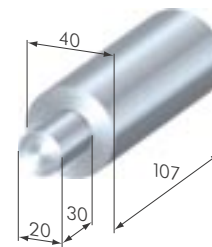
SL8200N

| Step Shaft Ø 40 to Ø 20 |                         |         |
|-------------------------|-------------------------|---------|
| Part N°                 | Description             | Weight  |
| SL8250N                 | Step Shaft Ø 40 to Ø 20 | 1.12 kg |



**Application:** The step shaft couples the pulley assembly with a coupling.

Other types are available on request.



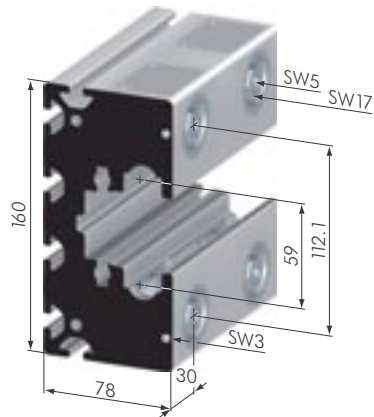
SL8250N





**Carriage 16 / 160**

| Part No | Description                     | Weight  |
|---------|---------------------------------|---------|
| SL0071N | Carriage 16 / 160 / 60 / 2 / S  | 1.38 kg |
| SL0073N | Carriage 16 / 160 / 140 / 4 / S | 3.33 kg |
| SL0075N | Carriage 16 / 160 / 280 / 4 / S | 6.40 kg |

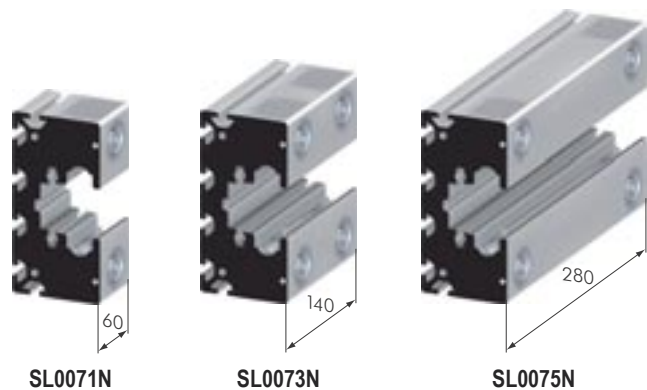
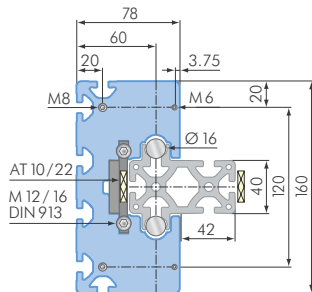


**Application:** For free running, high-load linear guidance systems.  
 On request, the carriage is also available in different lengths and with varying numbers of rollers. Operate only with a wiper and lubrication system. Optional service pockets for easier maintenance.

**Material:** aluminum, natural anodized

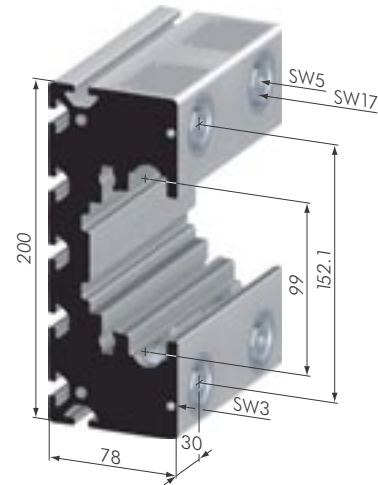
**Technical Data:**

- loadings:
  - dyn. 12500 N per roller in radial direction
  - stat. 6900 N per roller in radial direction
  - stat. 1300 N per roller in axial direction
- operational speed: 8 m/s
- excentric adjustment: ± 0.9 mm
- minimum stroke length: 60 mm



**Carriage 16 / 200**

| Part No | Description                     | Weight  |
|---------|---------------------------------|---------|
| SL0081N | Carriage 16 / 200 / 60 / 2 / S  | 1.52 kg |
| SL0083N | Carriage 16 / 200 / 140 / 4 / S | 3.64 kg |
| SL0087N | Carriage 16 / 200 / 200 / 4 / S | 5.10 kg |
| SL0085N | Carriage 16 / 200 / 280 / 4 / S | 7.10 kg |



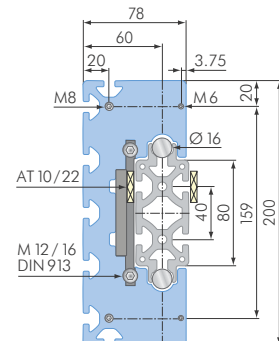
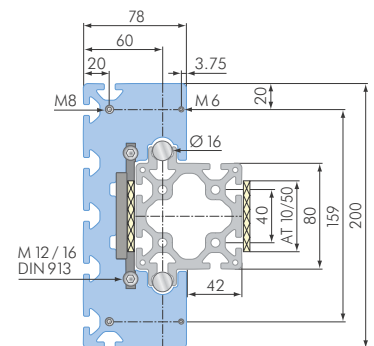
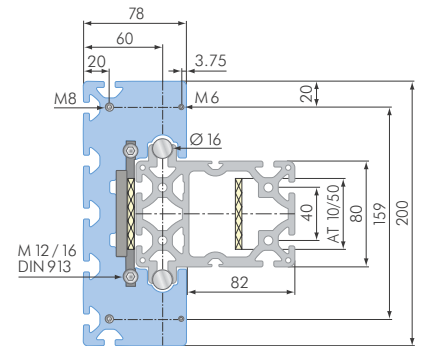
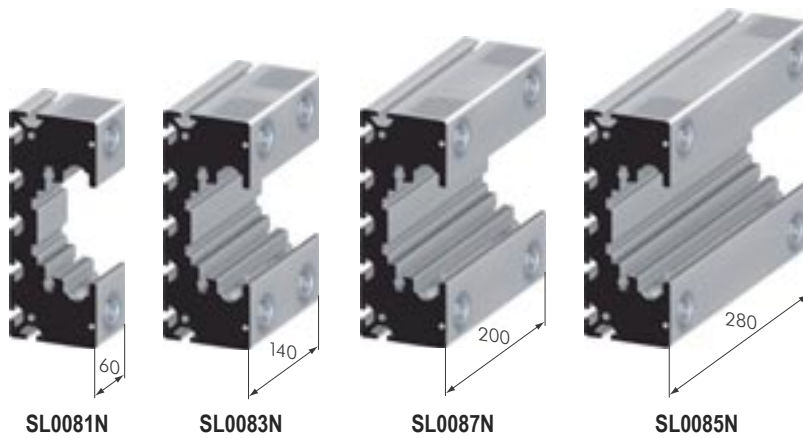
**Application:** For free running, high-load linear guidance systems.  
 On request, the carriage is also available in different lengths and with varying numbers of rollers. Operate only with a wiper and lubrication system. Optional service pockets for easier maintenance.

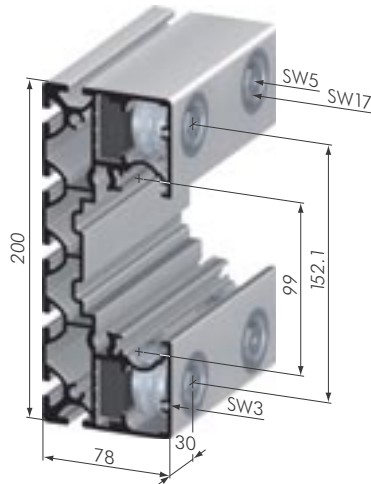
**Material:** aluminum, natural anodized

**Technical Data:**

- loadings: dyn. 12500 N per roller in radial direction  
 stat. 6900 N per roller in radial direction
- stat. 1300 N per roller in axial direction

- operational speed: 8 m/s
- excentric adjustment: ± 0.9 mm
- minimum stroke length: 60 mm





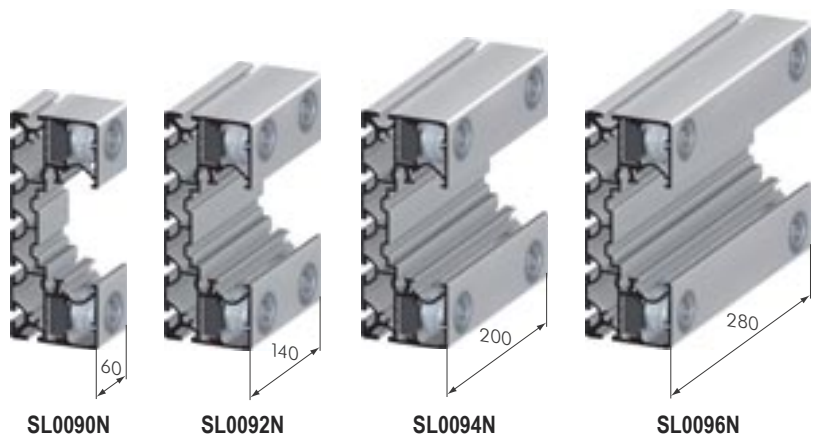
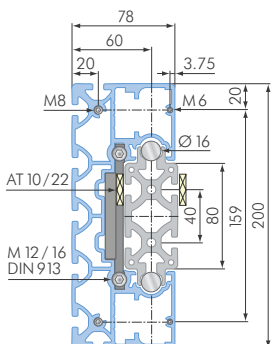
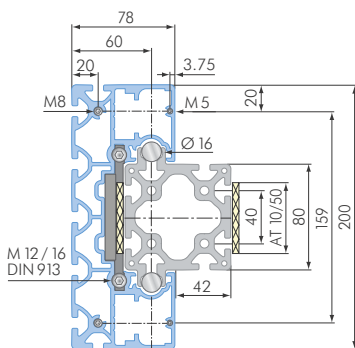
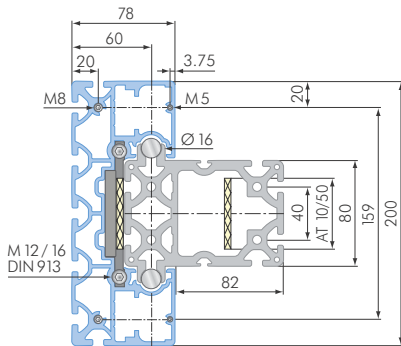
| Carriage 16 / 200 sl |                                |         |
|----------------------|--------------------------------|---------|
| Part No              | Description                    | Weight  |
| SL0090N              | Carriage 16 / 200 / 60 / 2 sl  | 0.51 kg |
| SL0092N              | Carriage 16 / 200 / 140 / 2 sl | 1.21 kg |
| SL0094N              | Carriage 16 / 200 / 200 / 4 sl | 1.75 kg |
| SL0096N              | Carriage 16 / 200 / 280 / 4 sl | 2.49 kg |

**Application:** For free running, high-load linear guidance systems.  
 On request, the carriage is also available in different lengths and with varying numbers of rollers.  
 Operate only with a wiper and lubrication system.

**Material:** aluminum, natural anodized

**Technical Data:**

- loadings: dyn. 12500 N per roller in radial direction  
 stat. 6900 N per roller in radial direction
- stat. 1300 N per roller in axial direction
- operational speed: 8 m/s
- excentric adjustment: ± 0.9 mm
- minimum stroke length: 60 mm



**Special Features of Carriage 16/200 superlight:**

The rollers are fixed into position by a steel plate and reducer bushing, as shown in the illustration to the right. The bushing is held in position by two grub screws and the roller is then assembled with the bearing axle.

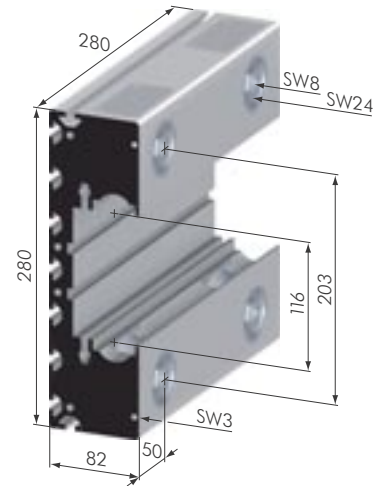




**Carriage 25**

| Part No | Description                     | Weight  |
|---------|---------------------------------|---------|
| SL0050N | Carriage 25 / 280 / 280 / 2 / S | 19.0 kg |
| SL0051N | Carriage 25 / 320 / 320 / 2 / S | 21.0 kg |
| SL0053N | Carriage 25 / 360 / 360 / 4 / S | 23.0 kg |

40



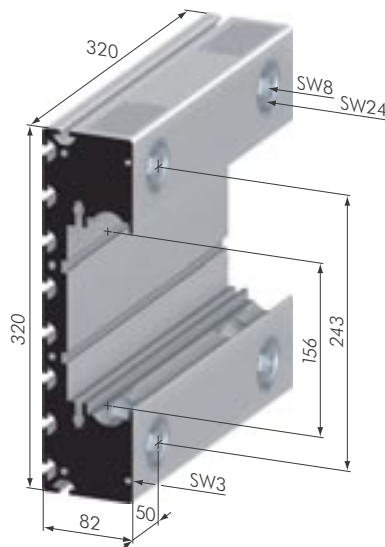
**SL0050N**

**Application:** For free running, high-load linear guidance systems.  
 On request, the carriage is also available in different lengths and with varying numbers of rollers.  
 Operate only with a wiper and lubrication system.

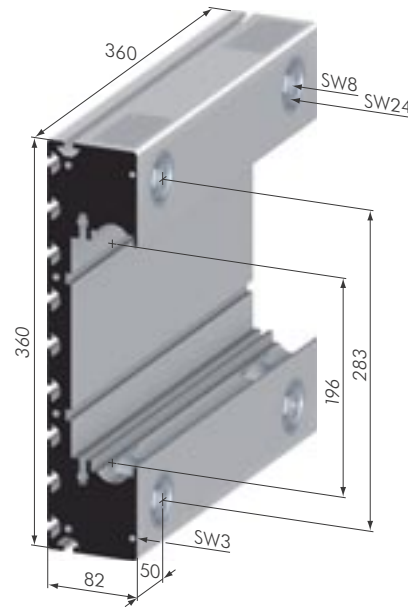
**Material:** aluminum, natural anodized

**Technical Data:**

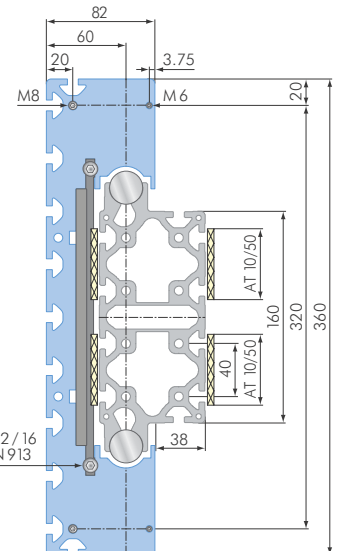
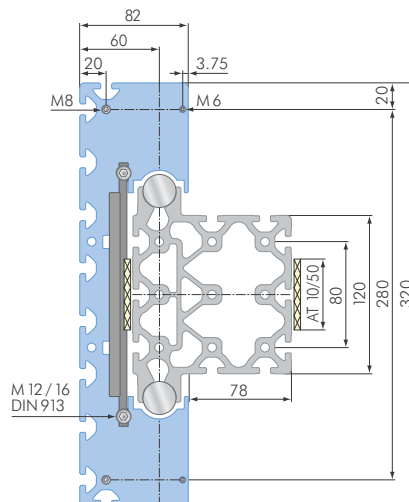
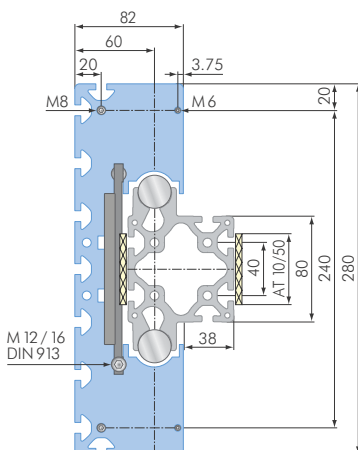
- loadings: dyn. 29200 N per roller in radial direction  
 stat. 16400 N per roller in radial direction
- stat. 12250 N per roller in axial direction
- operational speed: 8 m/s
- eccentric adjustment: ± 0.9 mm
- minimum stroke length: 280 mm



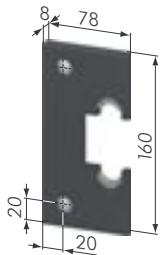
**SL0051N**



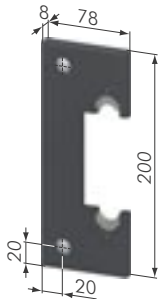
**SL0053N**



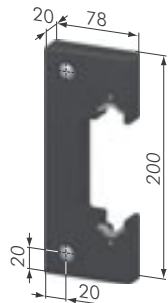
40



SL0162S



SL0164S



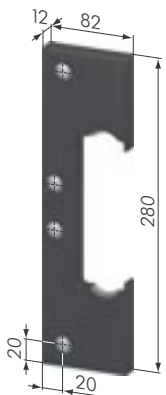
SL0165S

for external lubrication

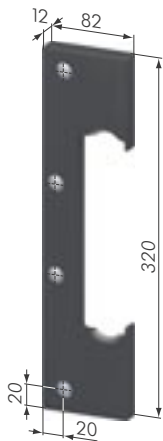
| Wiper And Lubrication Systems |                                    |        |
|-------------------------------|------------------------------------|--------|
| Part No                       | Description                        | Weight |
| SL0162S                       | Wiper and lubrication system 160   | 111 g  |
| SL0164S                       | Wiper and lubrication system 200   | 131 g  |
| SL0165S                       | Wiper and lubrication system 200 E | 385 g  |
| SL0166S                       | Wiper and lubrication system 16 S  | 13 g   |
| SL0167S                       | Wiper and lubrication system 280   |        |
| SL0168S                       | Wiper and lubrication system 320   | 268 g  |
| SL0169S                       | Wiper and lubrication system 360   |        |

**Application:** SL0165S: End cover with felt lubrication pad for linear actuators. Two pairs are required for each carriage.

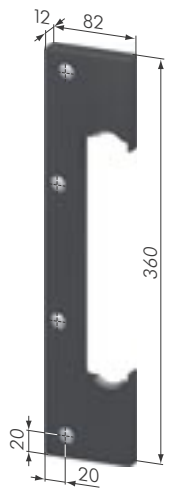
**Material:** aluminum, black anodized



SL0167S



SL0168S



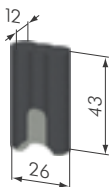
SL0169S

**Application:** SL0166S: Wiper and lubrication system for long carriages. The system is situated in a pocket of the carriage to protect the center rollers.

**Material:** PA 6, black

**Supply:** • 2x/4x cap head screw M 8 x 10 or M 8 x 16, DIN 7380, zinc-plated

**Accessories:** • lubrication lub MK5900020 for SL0162S, SL0164S and SL0165S  
• lubrication lub MK5900022 for SL0166S  
• lubrication lub MK5900024 for SL0167S, SL0168S and SL0169S  
• shaft oil SZ6003V



SL0166S

**Timing Belt Tensioners**

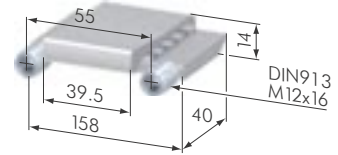
| Part No | Description                           | Weight |
|---------|---------------------------------------|--------|
| SL0174N | Timing Belt Tensioner AT 10/22        | 125 g  |
| SL0175N | Timing Belt Tensioner AT 10/50        | 250 g  |
| SL0230N | Timing Belt Tensioner 25/280 AT 10/50 |        |
| SL0232N | Timing Belt Tensioner 25/360 AT 10/50 |        |
| SL0234N | Timing Belt Tensioner 25/320 AT 10/75 | 350 g  |



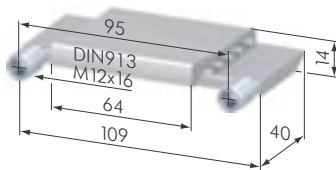
**Application:** Standard timing belt tensioner for timing belts AT 10/22 (for carriages 160), AT 10/50 (for carriages 200, 280, 360) and AT 10/75 (for carriages .../320).

**Material:** aluminum, natural anodized

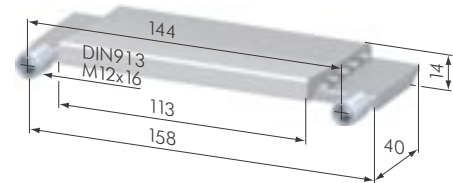
**Supply:** • 2x grub screw M 12 x 16, DIN 913



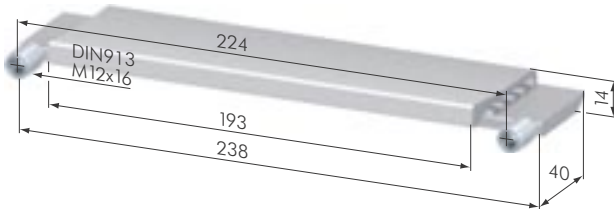
**SL0174N**



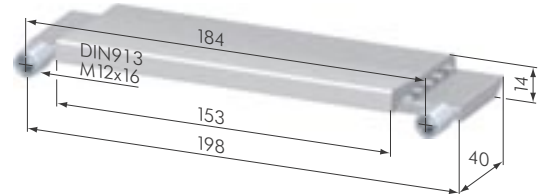
**SL0175N**



**SL0230N**



**SL0232N**



**SL0234N**



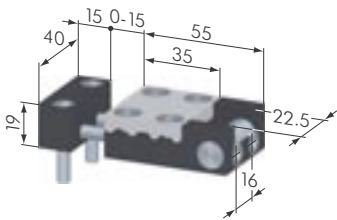
**Timing Belt Tensioners, external**

| Part No | Description                        | Weight |
|---------|------------------------------------|--------|
| SL0190S | Timing Belt Tensioner 22, external | 293 g  |
| SL0191S | Timing Belt Tensioner 50, external | 603 g  |

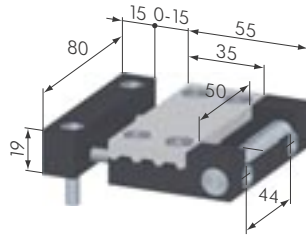
**Application:** For external tensioning of timing belts.

**Material:** steel, black

**Supply:** Complete as illustrated for the timing belt AT 10/22 and AT 10/50.



SL0190S



SL0191S

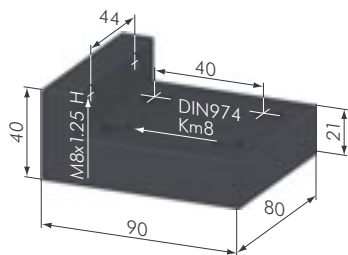


**Tensioning Plate Telescope Axis**

| Part No | Description                     | Weight |
|---------|---------------------------------|--------|
| SL0209S | Tensioning Plate Telescope Axis |        |

**Application:** For tensioning of timing belt AT 10/50 via timing belt tensioner 50 external at the end of the profile.

**Material:** steel, black



SL0209S



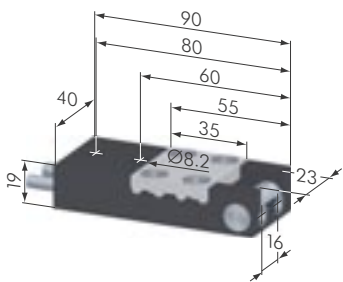
**Timing Belt Tensioner, external ZB**

| Part No | Description                           | Weight |
|---------|---------------------------------------|--------|
| SL0198S | Timing Belt Tensioner 22, external ZB | 285 g  |
| SL0199S | Timing Belt Tensioner 50, external ZB | 771 g  |

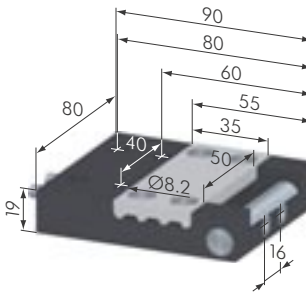
**Application:** For external tensioning of timing belts.

**Material:** steel, black

**Supply:** Complete as illustrated for the timing belt AT 10/22 and AT 10/50.



SL0198S



SL0199S



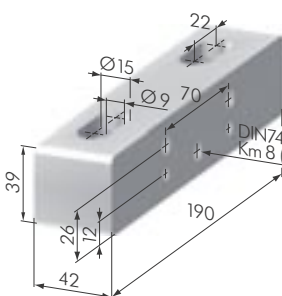
**Fixing Blocks**

| Part No | Description     | Weight |
|---------|-----------------|--------|
| SL0195N | Fixing Block 22 | 785 g  |
| SL0196N | Fixing Block 50 | 1546 g |

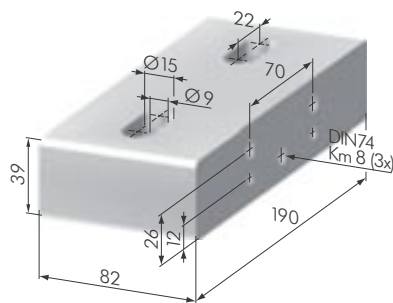
**Application:** For attaching external tensioners to the carriage.

**Material:** aluminum, natural anodized

**Supply:** No screws, fixing block only.



SL0195N



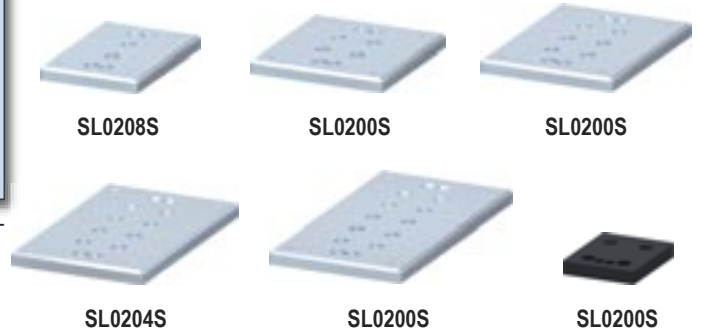
SL0196N

**Attachment Plates Tensioner**

| Part No | Description                         | Weight  |
|---------|-------------------------------------|---------|
| SL0208S | Attachment Plate Tensioner 40/80    | 1.85 kg |
| SL0200S | Attachment Plate Tensioner 80/80    | 2.63 kg |
| SL0202S | Attachment Plate Tensioner 80/120   | 3.35 kg |
| SL0204S | Attachment Plate Tensioner 80/160   | 4.02 kg |
| SL0206S | Attachment Plate Tensioner 80/200   | 4.70 kg |
| SL0290S | Attachment Plate Tensioner C 80/100 |         |

**Application:** For attaching of the external tensioners 22 ZB and 50 ZB respectively to the end of the track profile.

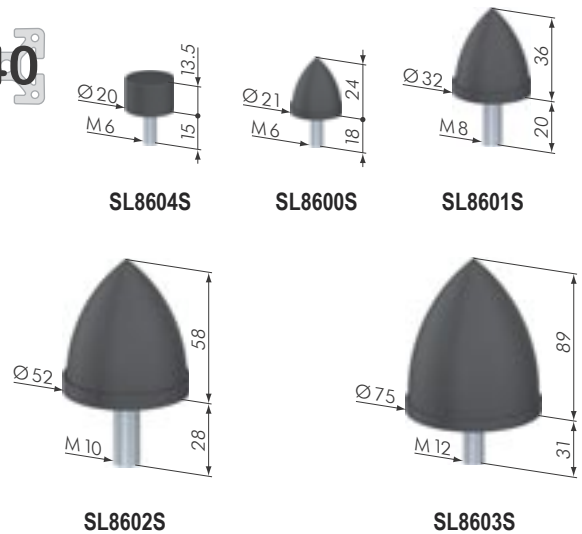
**Material:** steel, zinc-plated


**End Stops**

| Part No | Description         | Weight |
|---------|---------------------|--------|
| SL8604S | End Stop 20/13.5 M6 |        |
| SL8600S | End Stop 21/24 M6   | 11 g   |
| SL8601S | End Stop 32/36 M8   | 34 g   |
| SL8602S | End Stop 52/58 M10  | 109 g  |
| SL8603S | End Stop 75/89 M12  | 331 g  |

**Application:** For absorbing impact at the end of stroke positions.

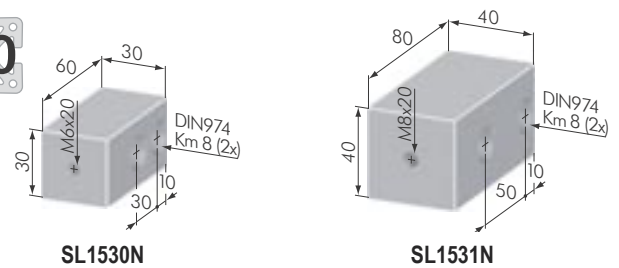
**Material:** rubber, black


**Fixing Blocks For End Stops**

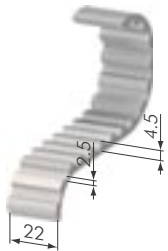
| Part No | Description                   | Weight |
|---------|-------------------------------|--------|
| SL1530N | Fixing Block For End Stops M6 | 132 g  |
| SL1531N | Fixing Block For End Stops M8 | 331 g  |

**Application:** For attaching end stops.

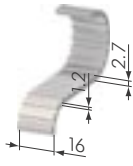
**Material:** aluminum, natural anodized



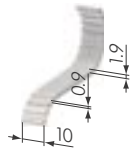
40



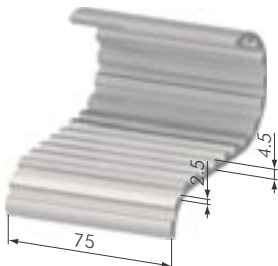
SL8500



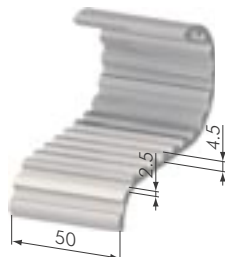
SL8560



SL8550



SL8520



SL8510

| Timing Belts |                      |                     |
|--------------|----------------------|---------------------|
| Part No      | Description          | Weight              |
| SL8550       | Timing Belt AT 3/10  | 22 <sup>g</sup> /m  |
| SL8560       | Timing Belt AT 5/16  | 57 <sup>g</sup> /m  |
| SL8500       | Timing Belt AT 10/22 | 250 <sup>g</sup> /m |
| SL8510       | Timing Belt AT 10/50 | 308 <sup>g</sup> /m |
| SL8520       | Timing Belt AT 10/75 | 563 <sup>g</sup> /m |

- Application:**
- AT 3/10 for pulley assembly C-40/57
  - AT 5/16 for pulley assembly C-40/100
  - AT 10/22 for pulley assemblies 40/40, 40/80, C-80/100
  - AT 10/50 for pulley assemblies 80/80, 80/100, 80/120, 120/120-50
  - AT 10/75 for pulley assembly 120/120-75

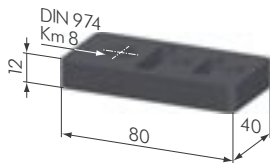
**Material:** abrasion resistant polyurethane with steel cording

**Technical Data:** operating temperature max. 80° C (176° F)

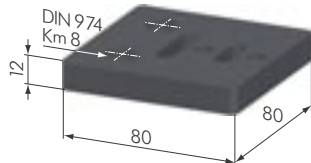
| Timing Belt | Tensile Strength | Elongation       |
|-------------|------------------|------------------|
| AT 3/10     | 410 N            | 0.1% with 102 N  |
| AT 5/16     | 1260 N           | 0.1% with 315 N  |
| AT 10/22    | 3200 N           | 0.1% with 800 N  |
| AT 10/50    | 8050 N           | 0.1% with 2012 N |
| AT 10/75    | 12220 N          | 0.1% with 3055 N |

40

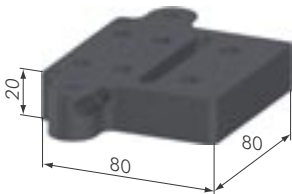
| Adapter Plates |                         |        |
|----------------|-------------------------|--------|
| Part No        | Description             | Weight |
| SL0250S        | Adapter Plate 40 x 80   | 75 g   |
| SL0255S        | Adapter Plate 80 x 80   | 176 g  |
| SL0257S        | Adapter Plate U 80 x 90 |        |
| SL0260S        | Adapter Plate 80 x 120  |        |



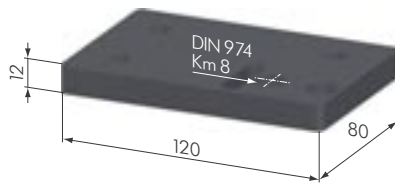
SL0250S



SL0255S



SL0257S



SL0260S

**Application:** To connect pulley assemblies 40 x 40 to the corresponding track profiles.

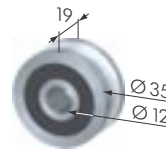
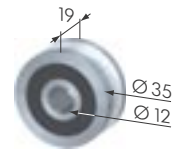
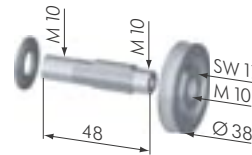
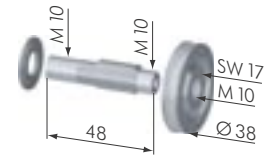
**Material:** aluminum, black anodized

**Rollers, Roller Axles 16**

| Part No | Description                    | Weight |
|---------|--------------------------------|--------|
| SL0155G | Roller 16                      | 125 g  |
| SL0155N | Roller 16, corrosion-resistant | 125 g  |
| SL0152S | Roller Axle 16, concentric     | 78 g   |
| SL0153S | Roller Axle 16, excentric      | 77 g   |

**Application:** For free running linear actuator systems in conjunction with a guidance rail  $\varnothing 16$ .

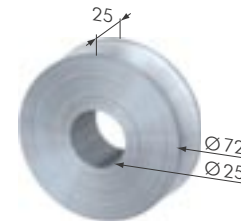
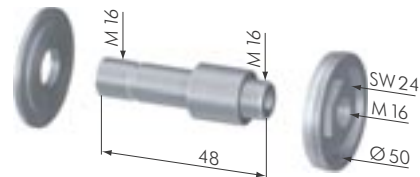
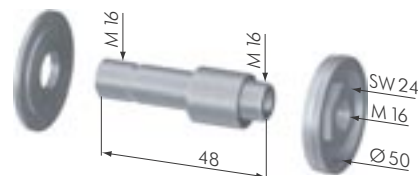
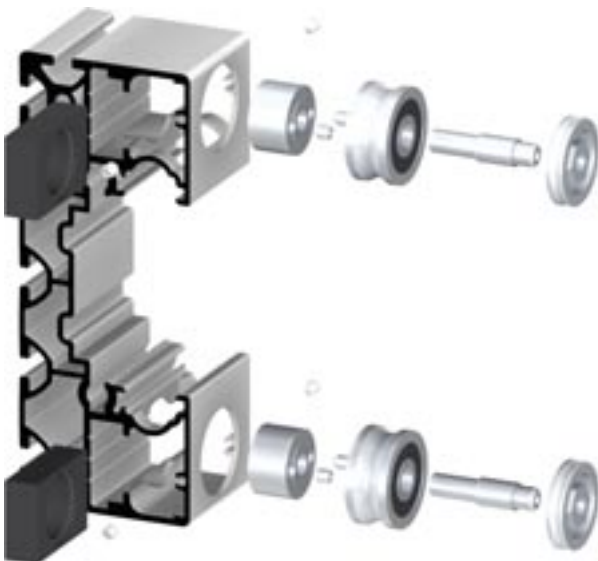
**Material:**  
 SL0155G: steel, hardened and ground  
 SL0155N: stainless-steel, corrosion-resistant  
 SL0152S: stainless-steel  
 SL0153S: stainless-steel

**40**

**SL0155G**

**SL0155N**

**SL0152S**

**SL0153S**
**Rollers, Roller Axles 25**

| Part No | Description                | Weight |
|---------|----------------------------|--------|
| SL0157G | Roller 25                  | 409 g  |
| SL0154Z | Roller Axle 25, concentric | 284 g  |
| SL0154E | Roller Axle 25, excentric  | 284 g  |

**Application:** For free running linear actuator systems in conjunction with a guidance rail  $\varnothing 25$ .

**Material:**  
 SL0157G: steel, hardened and ground  
 SL0154Z: stainless-steel  
 SL0154E: stainless-steel

**40**

**SL0157G**

**SL0154Z**

**SL0154E**




SL0184G



SL0185G



SL0188G



SL0189G



**Guidance Rails**

| Part No     | Description                      | Weight    |
|-------------|----------------------------------|-----------|
| SL0184G     | Ø 16 mm                          | 1.58 kg/m |
| SL0184G3000 | Ø 16 mm, L = 3000 mm             | 4.74 kg   |
| SL0185G     | Ø 16 mm, corrosion-resistant     | 1.58 kg/m |
| SL0185G3000 | Ø 16 mm, SS, L = 3000 mm         | 4.75 kg   |
| SL0188G     | Ø 25 mm                          | 3.85 kg/m |
| SL0188G3000 | Ø 25 mm, L = 3000 mm             | 11.55 kg  |
| SL0189G     | Ø 25 mm, corrosion-resistant     | 3.86 kg/m |
| SL0189G3000 | Ø 25 mm, L = 3000 mm, corr.-res. | 11.57 kg  |
| SB1500      | Doweling Of Guidance Rail        |           |

**Application:** Guidance rail for rollers Ø 16 and Ø 25.

**Material:** guidance rail Ø 16 h6/Ø 25 h6: steel, hardened and ground

**Technical Data:** min. hardness depth: 1.6 mm  
 HRc: 62 ± 2 mm  
 RZ: 1.6 µm



SB1500

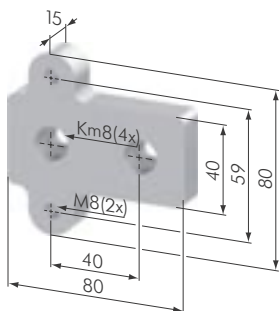


**Rail Stop Plates For Guidance Rails Ø 16**

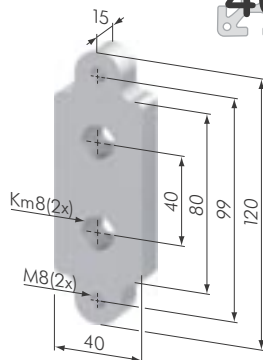
| Part No | Description                     | Weight |
|---------|---------------------------------|--------|
| SL0210N | Rail Stop Plate 16 40 x 40      | 70 g   |
| SL0211N | Rail Stop Plate 16 40 x 80 / 40 | 83 g   |
| SL0212N | Rail Stop Plate 16 40 x 80 / 40 | 144 g  |
| SL0213N | Rail Stop Plate 16 80 x 80      | 214 g  |
| SL0214N | Rail Stop Plate 16 80 x 120     | 294 g  |

**Application:** End fixing of guidance rail.

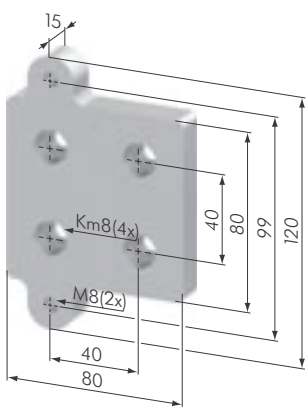
**Material:** aluminum, natural anodized



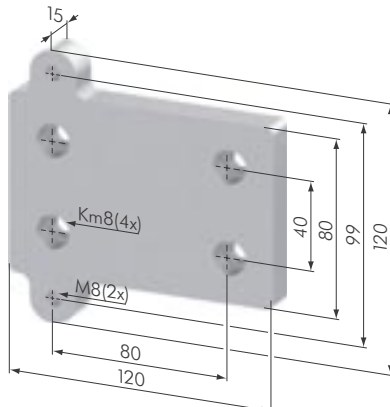
SL0211N



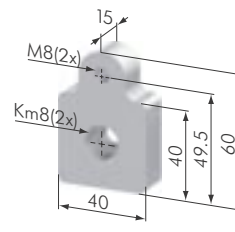
SL0212N



SL0213N



SL0214N



SL0210N





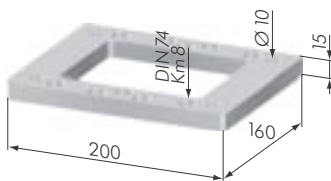
**Carriage Joining Plates**

| Part No | Description                      | Weight |
|---------|----------------------------------|--------|
| SL0512N | Carriage Joining Plate 200 x 200 | 780 g  |
| SL0514N | Carriage Joining Plate 240 x 200 | 890 g  |
| SL0516N | Carriage Joining Plate 280 x 200 | 1000 g |
| SL0510N | Carriage Joining Plate 160 x 200 | 700 g  |
| SL0502N | Carriage Joining Plate 356 x 200 | 2300 g |

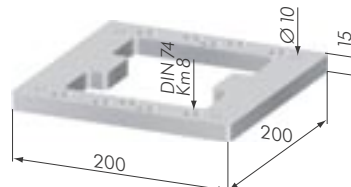


**Application:** For a strong connection of two carriages.

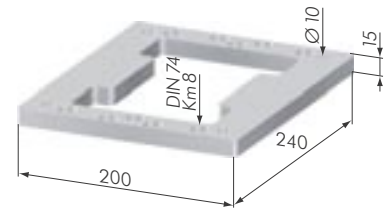
**Material:** aluminum, natural anodized



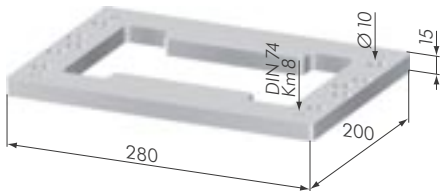
SL0510N



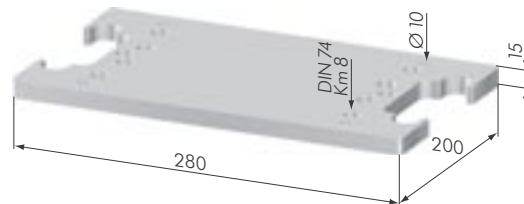
SL0512N



SL0514N



SL0516N



SL0502N

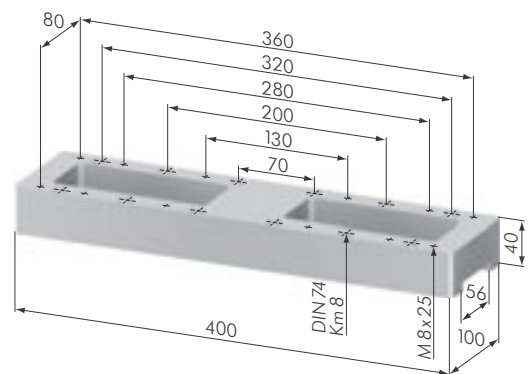
**Attachment Plate TSA**

| Part No | Description                               | Weight |
|---------|---|--------|
| SL0550N | Attachment Plate Plate 400 x 100, for TSA |        |

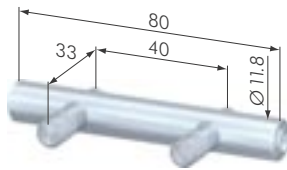


**Anwendung:** Joining plate for Omega drive 50 for assembling of the drive unit of telescope axis SL5400N.

**Material:** aluminum, natural anodized



SL0550N



SV3100V

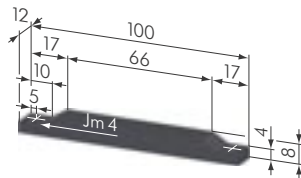


**Special Fastener 120**

| Part No | Description          | Weight |
|---------|----------------------|--------|
| SV3100V | Special Fastener 120 | 67 g   |

**Application:** To affix pulley assembly only to track profile 80 x 120.

**Material:** steel, zinc-plated



SL1500S

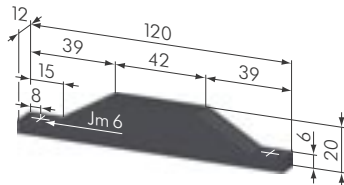


**Limit Switch Cams**

| Part No | Description          | Weight |
|---------|----------------------|--------|
| SL1500S | Limit Switch Cam 100 | 60 g   |
| SL1502S | Limit Switch Cam 120 | 145 g  |

**Application:** Cams for mechanical limit switches.

**Material:** steel, zinc-plated; black



SL1502S



**End Of Stroke Set 8**

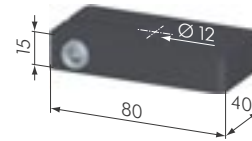
| Part No | Description         | Weight |
|---------|---------------------|--------|
| SL8610V | End Of Stroke Set 8 | 100 g  |

**Application:** To absorb impact at the ends of the stroke positions. An M 8 cap head screw is screwed into the underside of the carriage, the screw head protrudes into the profile groove. A PUR cord buffer is situated between the t-nuts. The outer t-nut is fixed into position. The inner t-nut decreases freely in the profile t-slot. One complete set is required for each position.

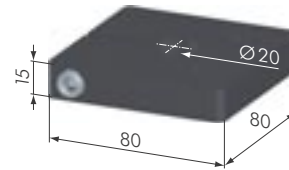
**Material:** stainless-steel, rubber



| Clamping Plates |                        |        |
|-----------------|------------------------|--------|
| Part No         | Description            | Weight |
| SL0222S         | Clamping Plate 40 x 80 | 322 g  |
| SL0227S         | Clamping Plate 80 x 80 | 624 g  |



SL0222S



SL0227S

**Application:** For clamping guidance rail  $\varnothing$  12 mm (SL0222S) or guidance rail  $\varnothing$  20 mm (SL0227S).

**Material:** steel, zinc-plated

**Supply:** SL0222S: clamp screw M 8 x 20  
SL0227S: clamp screw M 8 x 30

| Guidance Rails |                                  |           |
|----------------|----------------------------------|-----------|
| Part No        | Description                      | Weight    |
| SL0181G        | $\varnothing$ 10 mm              | 612 g/m   |
| SL0181G3000    | $\varnothing$ 10 mm, L = 3000 mm | 1.84 kg   |
| SL0182G        | $\varnothing$ 12 mm              | 880 g/m   |
| SL0182G3000    | $\varnothing$ 12 mm, L = 3000 mm | 2.64 kg   |
| SL0186G        | $\varnothing$ 20 mm              | 2.45 kg/m |
| SL0186G3000    | $\varnothing$ 20 mm, L = 3000 mm | 7.35 kg   |
| SB1008         | Cutting Charge For Guidance Rail |           |



SL0182G

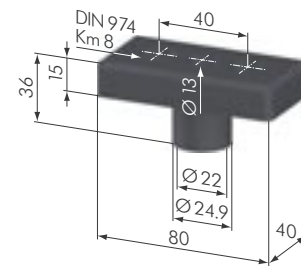


SL0186G

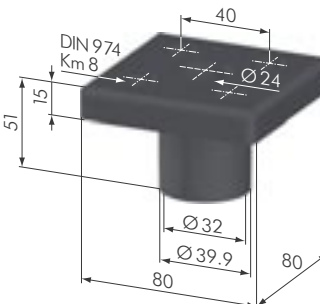
**Application:** For linear guidance systems in conjunction with the linear flange plates 40 x 80 and 80 x 80.

**Material:** steel, hardened and ground

| Linear Flange Plates |                             |        |
|----------------------|-----------------------------|--------|
| Part No              | Description                 | Weight |
| SL0300S              | Linear Flange Plate 40 x 80 | 130 g  |
| SL0400S              | Linear Flange Plate 80 x 80 | 239 g  |



SL0300S



SL0400S

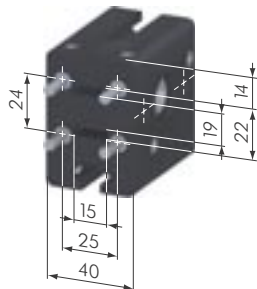
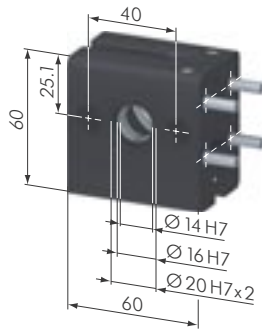
**Application:** For building linear guidance systems in conjunction with profile size / guidance rail.  
40 x 80 /  $\varnothing$  12 mm  
80 x 80 /  $\varnothing$  20 mm

**Material:** steel, hardened and ground

**Supply:** with internal ball bushing: 0670-212-40 for 40 x 80  
0670-220-40 for 80 x 80

Compensates for alignment errors of 30' maximum.





SL9800S

| Pulley Assembly |                           |        |
|-----------------|---------------------------|--------|
| Part N°         | Description               | Weight |
| SL9800S         | Pulley Assembly C 40 / 57 |        |

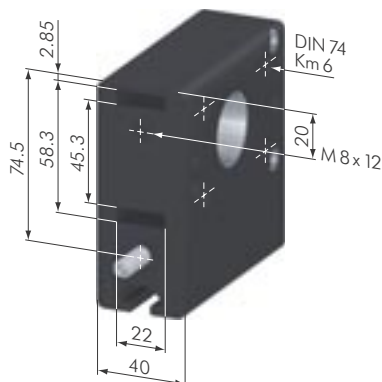
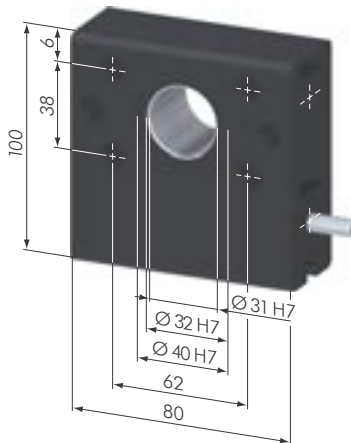
**Application:** This pulley assembly is used in conjunction with *Paletti* linear components to manufacture linear actuators.

**Material:** casing: aluminum, black anodized

**Technical Data:**

- timing belt AT 3 / 10: maximum loading MD = 5 Nm
- timing belt pulley: aluminum, tooth pitch AT 3  
    No of teeth 20
- pitch circle diameter: 19.10 mm
- bearing type: 61902-2Z
- With shrunken fit drive (steel) upon customer request (included in the price).
- max. bore for motor with keyway: Ø 14H7
- timing belt length 180°: 90.0 mm

Connected to profile via four special fasteners type G (SV1071V).  
Motor connection via flange plates per customer request.



SL9805S

| Pulley Assembly |                            |        |
|-----------------|----------------------------|--------|
| Part N°         | Description                | Weight |
| SL9805S         | Pulley Assembly C 40 / 100 |        |

**Application:** This pulley assembly is used in conjunction with *Paletti* linear components to manufacture linear actuators.

**Material:** casing: aluminum, black anodized

**Technical Data:**

- timing belt AT 5 / 16: maximum loading MD = 15 Nm
- timing belt pulley: aluminum, tooth pitch AT 5  
    No of teeth 32
- pitch circle diameter: 50.93 mm
- bearing type: 61808-2Z
- With shrunken fit drive (steel) upon customer request (included in the price).
- max. bore for motor with keyway: Ø 18H7
- timing belt length 180°: 180.0 mm

Connected to profile via one central fastener type G (SV1071V) and one cap head screw DIN 912. Motor connection via flange plates per customer request.

**Pulley Assembly**

| Part N <sup>o</sup> | Description                | Weight  |
|---------------------|----------------------------|---------|
| SL9810S             | Pulley Assembly C 80 / 100 | 1.56 kg |

**40**

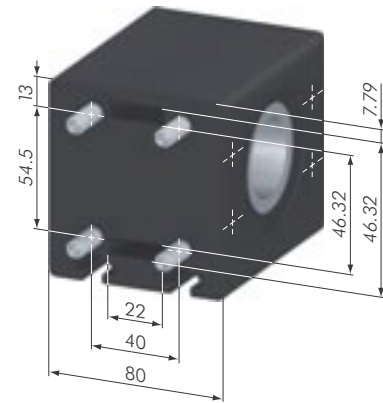
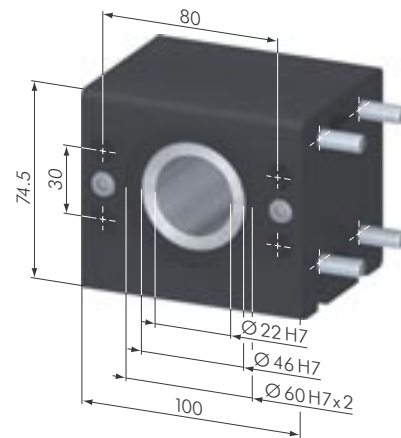
**Application:** This pulley assembly is used in conjunction with *Paletti* linear components to manufacture linear actuators.

**Material:** casing: aluminum, black anodized

**Technical Data:**

- timing belt AT 10/22: maximum loading MD = 70 Nm
- timing belt pulley: aluminum, tooth pitch AT 10  
Ne of teeth 19
- bearing type: 61909-RS
- pitch circle diameter: 60.48 mm
- With shrunken fit drive (steel) upon customer request (included in the price).
- max. bore for motor with keyway:  $\varnothing 22H7$
- timing belt length 180°: 195.0 mm

Connected to profile via four cap head screws DIN912.  
Motor connection via flange plates per customer request.


**SL9810S**
**Omega Drive**

| Part N <sup>o</sup> | Description           | Weight |
|---------------------|-----------------------|--------|
| SL9820S             | Omega Drive AT 5 / 16 |        |

**40**

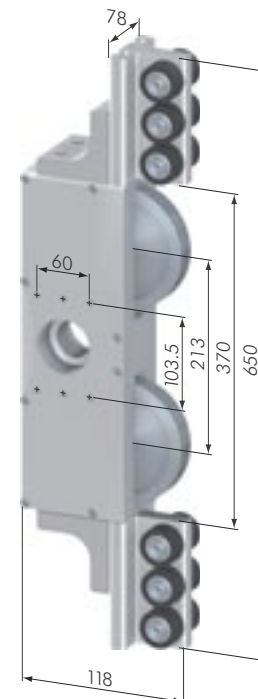
**Application:** This Omega drive is used in conjunction with the *Paletti* C-Track 80 x 100 to manufacture linear actuators.

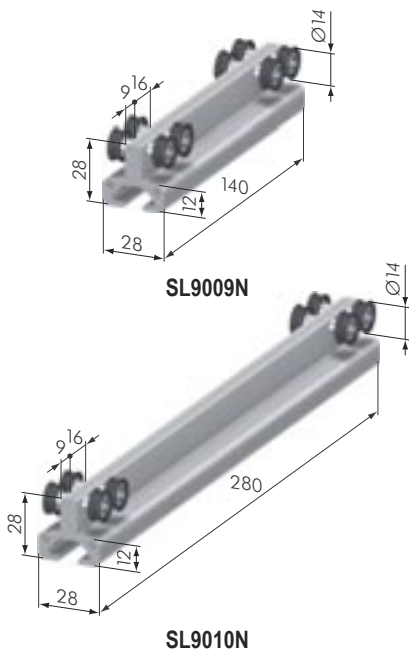
**Material:** casing: aluminum, black anodized

**Technical Data:**

- timing belt AT 5/16: maximum loading MD = 70 Nm
- timing belt pulley: aluminum, tooth pitch AT 5  
Ne of teeth 56
- pitch circle diameter: 89.13 mm
- With shrunken fit drive (steel)
- per customer request (included in the price).
- max. bore for motor with keyway:  $\varnothing 30H7$
- max. bore for motor with taper lock coupling:  $\varnothing 34H7$
- timing belt length 180°: 195.0 mm

Motor connection via flange plates per customer request.


**SL9820S**



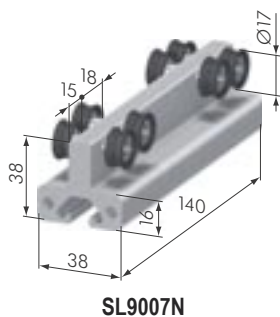
30

| Double Carriage C 30 / 43 |                                 |        |
|---------------------------|---------------------------------|--------|
| Part No                   | Description                     | Weight |
| SL9009N                   | Double Carriage 30 / 43 140 / 8 |        |
| SL9010N                   | Double Carriage 30 / 43 280 / 8 |        |

**Application:** For creating sliding doors and other linear applications.

**Material:** profile: aluminum, natural anodized  
roller: POM

**Technical Data:**  
The carriage rollers have no excentric adjustment. The rollers are preset to suit the internal guidance form of the track profile.



40

| Double Carriage C 40 / 57 |                                 |        |
|---------------------------|---------------------------------|--------|
| Part No                   | Description                     | Weight |
| SL9007N                   | Double Carriage 40 / 57 140 / 8 |        |
| SL9008N                   | Double Carriage 40 / 57 280 / 8 |        |

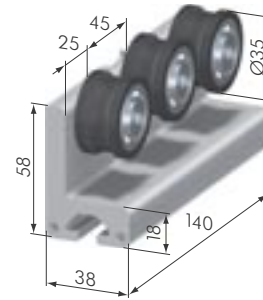
**Application:** For creating sliding doors and other linear applications.

**Material:** profile: aluminum, natural anodized  
roller: POM

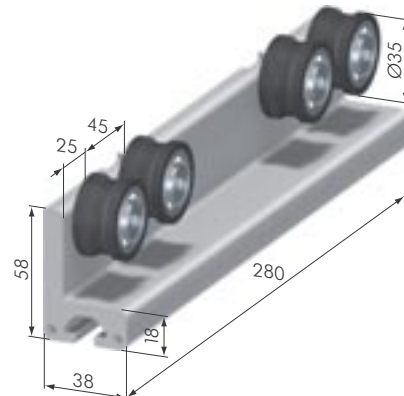
**Technical Data:**  
The carriage rollers have no excentric adjustment. The rollers are preset to suit the internal guidance form of the track profile.

**Single Carriage C 40 / 100**

| Part No | Description                                       | Weight |
|---------|---|--------|
| SL9005N | Single Carriage 40 / 100 140 / 3                  |        |
| SL9006N | Single Carriage 40 / 100 280 / 4                  |        |
| SL9011N | Single Carriage 40 / 100 140 / 3, hanging version |        |
| SL9012N | Single Carriage 40 / 100 280 / 4, hanging version |        |



SL9005N / SL9011N



SL9006N / SL9012N

**Application:** For creating sliding doors and other linear applications.

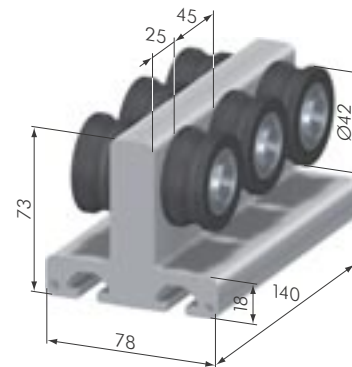
**Material:** profile: aluminum, natural anodized  
roller: POM

**Technical Data:**

- excentric adjustment:  $\pm 0.9$  mm

**Single / Double Carriage C 80 / 100**

| Part No | Description                        | Weight |
|---------|------------------------------------|--------|
| SL9000N | Double Carriage C 80 / 100 140 / 6 | 625 g  |
| SL9001N | Double Carriage C 80 / 100 280 / 8 | 1000 g |
| SL9002N | Single Carriage C 80 / 100 140 / 3 | 508 g  |
| SL9003N | Single Carriage C 80 / 100 280 / 4 | 348 g  |



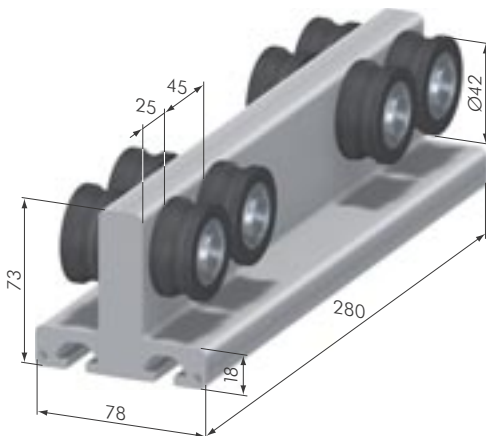
SL9000N

**Application:** For creating sliding doors and other linear applications.

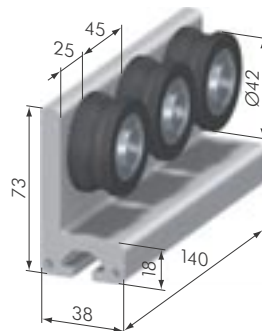
**Material:** profile: aluminum, natural anodized  
roller: POM

**Technical Data:**

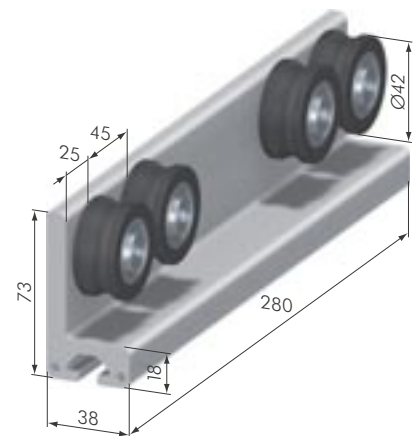
- excentric adjustment:  $\pm 0.9$  mm



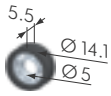
SL9001N



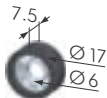
SL9002N



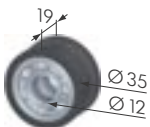
SL9003N



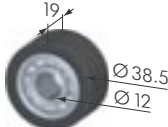
SL0161S



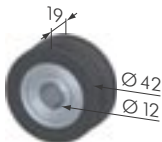
SL0160S



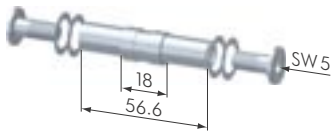
SL0159S



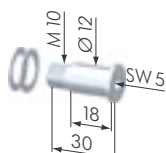
SL0156S



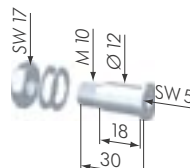
SL0158S



SL0150E



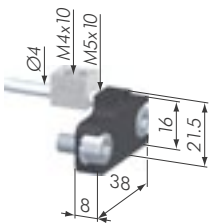
SL0150Z



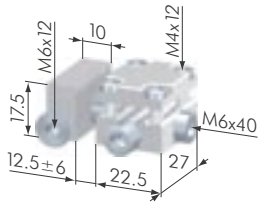
SL0151E

| Rollers / Roller Axles |                                    |        |
|------------------------|------------------------------------|--------|
| Part No                | Description                        | Weight |
| SL0161S                | Roller C 30 / 43 POM               |        |
| SL0160S                | Roller C 40 / 57 POM               |        |
| SL0159S                | Roller C 40 / 100 POM              |        |
| SL0156S                | Roller C 80 / 100 POM, straight    |        |
| SL0158S                | Roller C 80 / 100 POM              |        |
| SL0150E                | Roller Axle Double C-Carriage 80 E |        |
| SL0150Z                | Roller Axle C-Carriage 80 Z        |        |
| SL0151E                | Roller Axle Single C-Carriage E    |        |

**Application:** Rollers used when constructing custom C-carriages. The roller C 80/100 POM, straight, can be used in conjunction with the roller C 80/100 POM in order to withstand higher loads. The concentric roller axle is used for both single and double sided C-carriages.



SL0240N



SL0241N



SL0242N

| Timing Belt Tensioners |                                  |        |
|------------------------|----------------------------------|--------|
| Part No                | Description                      | Weight |
| SL0240N                | Timing Belt Tensioner C 40 / 57  |        |
| SL0241N                | Timing Belt Tensioner C 40 / 100 |        |
| SL0242N                | Timing Belt Tensioner C 80 / 100 |        |

**Application:** For attaching and tensioning of the timing belt to the C-carriages manufacture free running and long-living linear actuator systems, that do not need any lubrication of the roller guidance.



### Pulley Assembly 80 / 90

| Part No | Description             | Weight |
|---------|-------------------------|--------|
| SL9850S | Pulley Assembly 80 / 90 |        |

**Application:** This pulley assembly is used in conjunction with Paletti linear components to manufacture linear actuators.

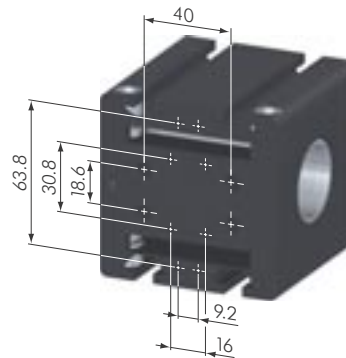
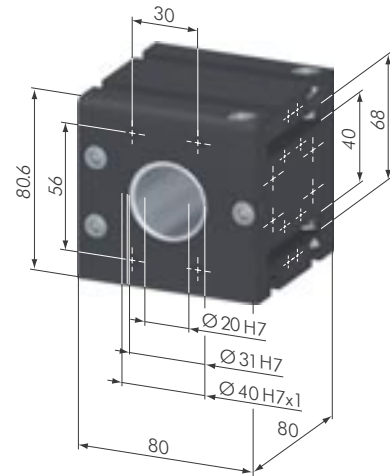
**Material:** casing: aluminum, black anodized

#### Technical Data:

- timing belt AT 10 / 50: maximum loading MD = 60 Nm
- timing belt pulley: aluminum, tooth pitch AT 10  
Ne of teeth 15
- pitch circle diameter: 47.75 mm
- bearing type: 619079-2RSR
- With shrunk fit drive (steel) on customer request (included in the price).
- max. bore for motor with keyway:  $\varnothing 30H7$
- max. bore for motor with taper lock coupling:  $\varnothing 34H7$
- timing belt length  $180^\circ$ : 151.0 mm

Connected to profile via four special central fasteners type G, four grub screws M 4 x 30 and two T-nuts M 5 mini (SV2193V). Motor connection via flange plates per customer request.

40



SL9850S

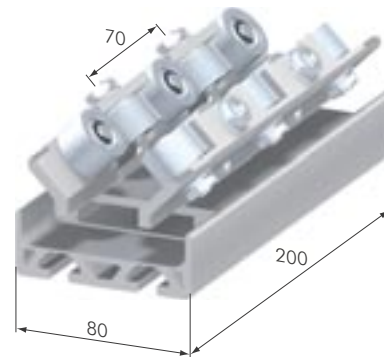
### Carriage 80 / 90

| Part No | Description               | Weight  |
|---------|---------------------------|---------|
| SL8310N | Carriage 80 / 90 160 / 8  | 1,15 kg |
| SL8320N | Carriage 80 / 90 200 / 10 |         |
| SL8330N | Carriage 80 / 90 280 / 10 |         |

**Application:** For free running, high-load linear guidance systems. Upon request, the carriage is also available in different lengths and with varying numbers of rollers.

**Material:** carriage: aluminum, natural anodized  
timing belt tensioner: aluminum, natural anodized  
roller axles, bearings: stainless-steel  
roller shell: plastic

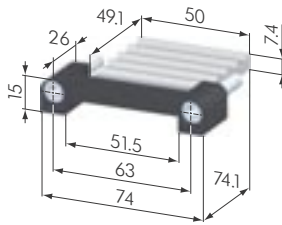
40



SL8320N

#### Technical Data:

- operational speed:  $8 \text{ m/s}$
- maintenance-free



SL0180S

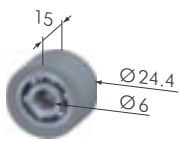


**Timing Belt Tensioner 80 / 90**

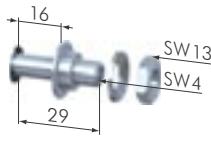
| Part No | Description                   | Weight |
|---------|-------------------------------|--------|
| SL0180S | Timing Belt Tensioner 80 / 90 | 101 g  |

**Application:** For attaching and tensioning of the timing belt to the carriage 80 / 90.

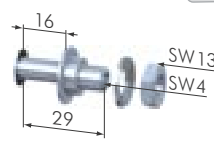
**Material:** timing belt tensioner: steel, black  
 clamping plate: aluminum, natural anodized



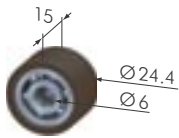
SL0130S



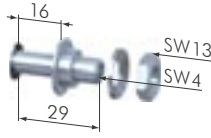
SL0110V



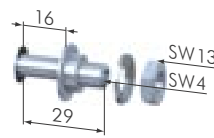
SL0120V



SL0135V



SL0115V



SL0125V



**Roller / Roller Axle 80 / 90**

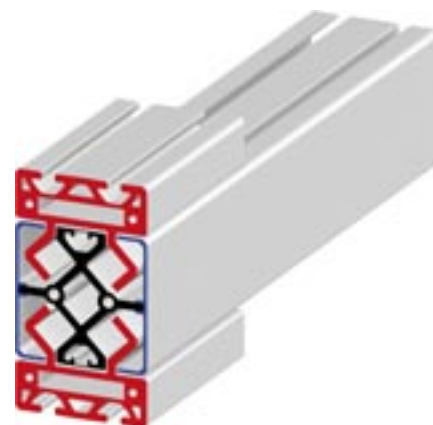
| Part No | Description                        | Weight |
|---------|------------------------------------|--------|
| SL0130S | Roller F 80 / 90                   | 18.4 g |
| SL0110V | Roller Axle 80 / 90, concentric    | 16.8 g |
| SL0120V | Roller Axle 80 / 90, excentric     | 16.8 g |
| SL0135V | Roller F 80 / 90 VU                |        |
| SL0115V | Roller Axle 80 / 90 VU, concentric | 16.8 g |
| SL0125V | Roller Axle 80 / 90 VU, excentric  | 16.8 g |

**Application:** Rollers and roller axles for the assembly of free running and resilient single and double guidances, that do not need any lubrication of the roller guidance.

**Material:** roller shell: plastic or Vulkollan (rubber)  
 roller axles: stainless-steel



single guidance 80 / 90



double guidance 80 / 90

**Carriage 120**

| Part N° | Description                   | Weight |
|---------|-------------------------------|--------|
| SL8340N | Carriage 120, steel rollers   |        |
| SL8345N | Carriage 120, plastic rollers |        |

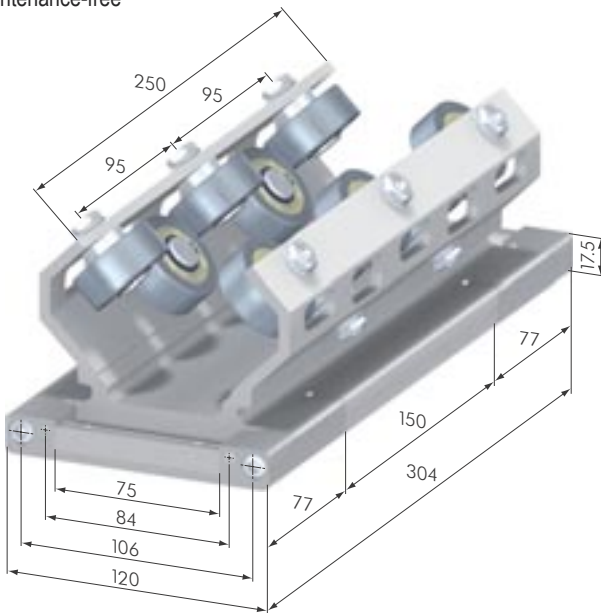
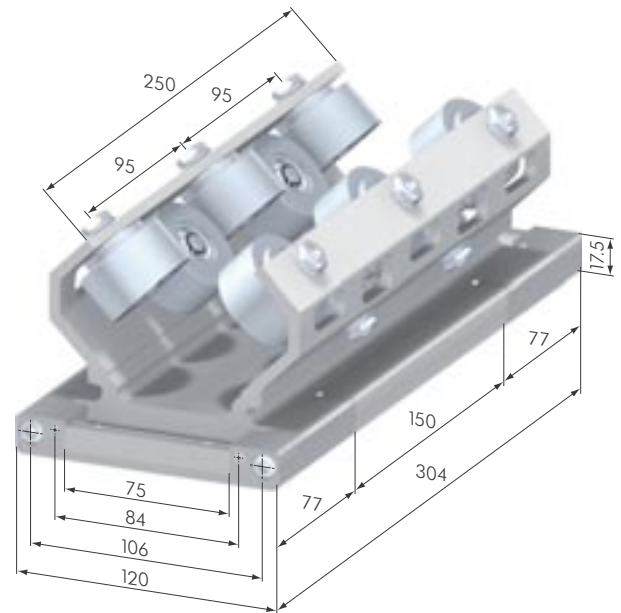
**40**

**Application:** For free running, high-load linear guidance systems. Upon request, the carriage is also available in different lengths and with varying numbers of rollers.

**Material:** carriage: aluminum, natural anodized  
 timing belt tensioner: aluminum, natural anodized  
 roller axles, bearings: steel, zinc-plated  
 roller shell: steel, zinc-plated (SL8340N)  
 plastic (SL8345N)

**Technical Data:**

- operational speed: 8 m/s
- maintenance-free

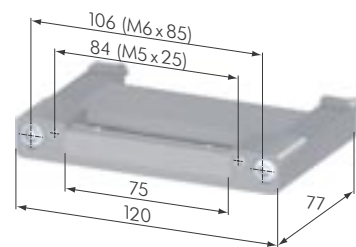

**SL8340N**

**SL8345N**
**Timing Belt Tensioner 120 x 120 45°**

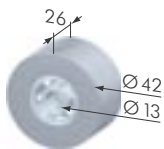
| Part N° | Description                         | Weight |
|---------|-------------------------------------|--------|
| SL0185S | Timing Belt Tensioner 120 x 120 45° |        |

**40**

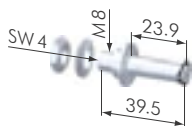
**Application:** For attaching and tensioning of the timing belt AT 10 / 75 to the carriage 120 to manufacture free running and long-living linear actuator systems, that do not need any lubrication of the roller guidance.

**Material:** aluminum, natural anodized

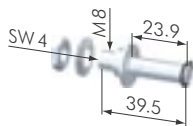

**SL0185S**



SL0140S



SL0132V

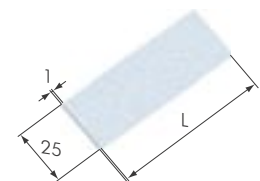


SL0133V

| Roller / Roller Axles 100 / 120 |                                   |        |
|---------------------------------|-----------------------------------|--------|
| Part No                         | Description                       | Weight |
| SL0140S                         | Roller 100 / 120                  |        |
| SL0133V                         | Roller Axle 100 / 120, concentric |        |
| SL0132V                         | Roller Axle 100 / 120, excentric  |        |

**Application:** Rollers and roller axles for the assembly of free running and resilient linear actuators, that do not need any lubrication of the roller guidance.

**Material:** roller shell: plastic  
roller axles: stainless-stell

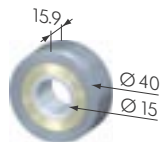


SL0187G

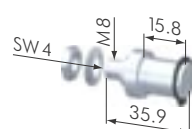
| Steel Strap |                          |        |
|-------------|--------------------------|--------|
| Part No     | Description              | Weight |
| SL0187G     | Steel Strap              |        |
| SL0187G3000 | Steel Strap, L = 3000 mm |        |

**Application:** Roller guide of linear actuator 120 x 120 AT 10/75 with steel rollers.

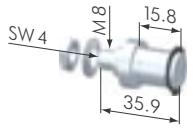
**Material:** cold-rolled steel strap



SL0141G



SL0130V

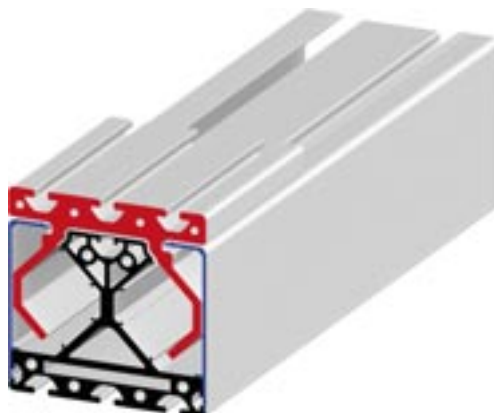


SL0131V

| Roller / Roller Axles 100 / 120 Steel |   |        |
|---------------------------------------|---|--------|
| Part No                               | Description                             | Weight |
| SL0141G                               | Roller 100 / 120 Steel                  |        |
| SL0130V                               | Roller Axle 100 / 120 Steel, concentric |        |
| SL0131V                               | Roller Axle 100 / 120 Steel, excentric  |        |

**Application:** Rollers and roller axles for the assembly of free running and resilient linear actuators, that do not need any lubrication of the roller guidance.

**Material:** roller shell: stainless-steel  
roller axles: stainless-steel



Linear Guidance 120 AT 10 / 75